

Anti-FLT3 antibody (540-620) (STJ93095)

STJ93095

GENERAL INFORMATION

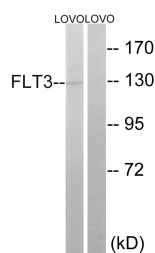
Product Type	Primary antibodies
Short Description	Rabbit polyclonal antibody anti-Receptor-Type Tyrosine-Protein Kinase Flt3 (540-620) is suitable for use in Western Blot and ELISA research applications.
Applications	WB, ELISA
Host/Source	Rabbit
Reactivity	Human, Mouse

PRODUCT PROPERTIES

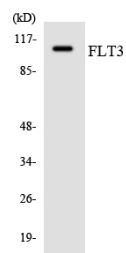
Clonality	Polyclonal
Clone ID	
Concentration	1 mg/mL
Conjugation	Unconjugated
Purification	The antibody was affinity-purified from rabbit anti-serum by affinity-chromatography.
Dilution Range	WB 1:500-1:2000 ELISA 1:20000
Formulation	PBS, 50% Glycerol, 0.5% BSA and 0.02% Sodium Azide.
Isotype	IgG
Storage	Store at -20°C for up to 1 year from the date of receipt, and avoid repeat freeze-thaw cycles.
Instruction	

TARGET INFORMATION

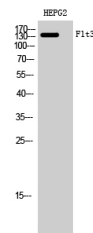
Gene ID	2322
Gene Symbol	FLT3
Uniprot ID	FLT3_HUMAN
Immunogen	The antiserum was produced against synthesized peptide derived from human FLT3 at amino acid range 565-614
Immunogen Region	540-620
Specificity	FLT3 polyclonal antibody (Receptor-Type Tyrosine-Protein Kinase Flt3) binds to endogenous Receptor-Type Tyrosine-Protein Kinase Flt3 at the amino acid region 540-620.
Immunogen Sequence	



Western blot analysis of lysates from LOVO cells, using FLT3 Antibody. The lane on the right is blocked with the synthesized peptide.



Western blot analysis of the lysates from K562 cells using FLT3 antibody.



Western blot analysis of HEPG2 cells using Flt3 Polyclonal Antibody diluted at 1: 1000

This product is suitable for in-vitro studies under the RESEARCH USE ONLY [RUO] licence. This product must not be used as for diagnostic or other medical purposes.
St John's Laboratory Ltd, Knowledge Dock Business Centre, University Way, London, E16 2RD | Tel: 0208 223 3081