

Anti-ID4 antibody (1-80 N-Term) (STJ93637)

STJ93637

GENERAL INFORMATION

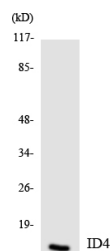
Product Type	Primary antibodies
Short Description	Rabbit polyclonal antibody anti-Dna-Binding Protein Inhibitor Id-4 (1-80 N-Term) is suitable for use in Western Blot, Immunohistochemistry, Immunofluorescence and ELISA research applications.
Applications	WB, IHC-P, IF-P, ELISA
Host/Source	Rabbit
Reactivity	Human, Mouse, Rat

PRODUCT PROPERTIES

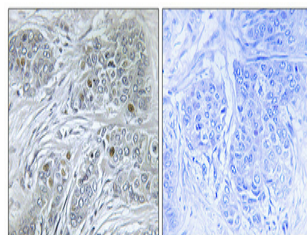
Clonality	Polyclonal
Clone ID	
Concentration	1 mg/mL
Conjugation	Unconjugated
Purification	The antibody was affinity-purified from rabbit anti-serum by affinity-chromatography.
Dilution Range	WB 1:500-1:2000 IHC 1:100-1:300 ELISA 1:20000
Formulation	PBS, 50% Glycerol, 0.5% BSA and 0.02% Sodium Azide.
Isotype	IgG
Storage Instruction	Store at -20°C for up to 1 year from the date of receipt, and avoid repeat freeze-thaw cycles.

TARGET INFORMATION

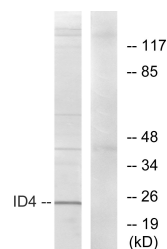
Gene ID	3400
Gene Symbol	ID4
Uniprot ID	ID4_HUMAN
Immunogen	The antiserum was produced against synthesized peptide derived from human ID4 at amino acid range 1-50
Immunogen Region	1-80 N-Term
Specificity	ID4 polyclonal antibody (Dna-Binding Protein Inhibitor Id-4) binds to endogenous Dna-Binding Protein Inhibitor Id-4 at the amino acid region 1-80 N-Term.
Immunogen Sequence	



Western blot analysis of the lysates from HeLa cells using ID4 antibody.



Immunohistochemical analysis of paraffin-embedded Human breast cancer. Antibody was diluted at 1:100 (4°C overnight). High-pressure and temperature Tris-EDTA, pH8.0 was used for antigen retrieval. Negative control (right) obtained from antibody was pre-absorbed by immunogen peptide.



Western blot analysis of lysates from HepG2 cells, using ID4 Antibody. The lane on the right is blocked with the synthesized peptide.



Western blot analysis of various cells using Id4 Polyclonal Antibody diluted at 1: 500 cells nucleus extracted by Minuex™ Cytoplasmic and Nuclear Fractionation kit (SC-003, Inventibiotech, MN, USA).

This product is suitable for in-vitro studies under the RESEARCH USE ONLY [RUO] licence. This product must not be used as for diagnostic or other medical purposes.
St John's Laboratory Ltd, Knowledge Dock Business Centre, University Way, London, E16 2RD | Tel: 0208 223 3081