

Anti-Phospho-SMAD3-S425 antibody (STJ98875)

STJ98875

GENERAL INFORMATION

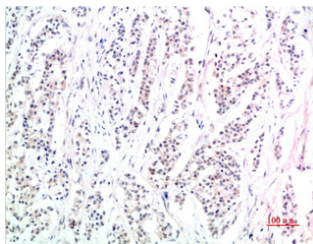
Product Type	Primary antibodies
Short Description	Mouse monoclonal antibody anti-Phospho-Mothers Against Decapentaplegic Homolog 3-S425 is suitable for use in Immunohistochemistry and Immunofluorescence research applications.
Applications	IHC-P, IF-P
Host/Source	Mouse
Reactivity	Human, Mouse, Rat

PRODUCT PROPERTIES

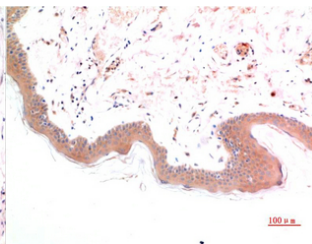
Clonality	Monoclonal
Clone ID	
Concentration	1 mg/mL
Conjugation	Unconjugated
Purification	The antibody was isolated from ascitic fluid by immunoaffinity chromatography using antigens coupled to agarose beads.
Dilution Range	IHC-P 1:50-300
Formulation	PBS, 50% Glycerol, 0.5% BSA and 0.02% Sodium Azide.
Isotype	
Storage Instruction	Store at -20°C for up to 1 year from the date of receipt, and avoid repeat freeze-thaw cycles.

TARGET INFORMATION

Gene ID	4088
Gene Symbol	SMAD3
Uniprot ID	SMAD3_HUMAN
Immunogen	Synthetic peptide of Phospho-Smad3 (S425)
Immunogen Region	
Specificity	Phospho-SMAD3-S425 monoclonal antibody (Mothers Against Decapentaplegic Homolog 3) binds to endogenous Mothers Against Decapentaplegic Homolog 3 only when phosphorylated at S425.
Immunogen Sequence	



Immunohistochemical analysis of paraffin-embedded Human Stomach Carcinoma Tissue using Phospho-Smad3 (S425) Mouse mAb diluted at 1:200



Immunohistochemical analysis of paraffin-embedded Human Skin Tissue using Phospho-Smad3 (S425) Mouse mAb diluted at 1:200

This product is suitable for in-vitro studies under the RESEARCH USE ONLY [RUO] licence. This product must not be used as for diagnostic or other medical purposes.
St John's Laboratory Ltd, Knowledge Dock Business Centre, University Way, London, E16 2RD | Tel: 0208 223 3081