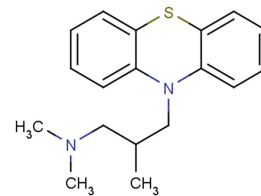


## Alimemazine

## Chemical Properties

|                   |  |
|-------------------|--|
| CAS No.:          | 84-96-8  |
| Formula:          | C <sub>18</sub> H <sub>22</sub> N <sub>2</sub> S                       |
| Molecular Weight: | 298.45   |
| Appearance:       | N/A  |
| Storage:          | 0-4°C for short term (days to weeks), or -20°C for long term (months). |



## Biological Description

|                            |  |
|----------------------------|--|
| Description                | Alimemazine (Trimeprazine) is generally used as an antipruritic agent and also a hemagglutinin (HA)-receptor antagonist. Alimemazine also acts as a partial agonist against the histamine H1 receptor (H1R) and other GPCRs. |
| Targets(IC <sub>50</sub> ) | HA receptor: None  |

## Solubility Information

|            |   |
|------------|---|
| Solubility | < 1 mg/ml refers to the product slightly soluble or insoluble |
|------------|---|

## Preparing Stock Solutions

|       | 1mg      | 5mg       | 10mg      |
|-------|----------|-----------|-----------|
| 1 mM  | 3.351 mL | 16.753 mL | 33.506 mL |
| 5 mM  | 0.67 mL  | 3.351 mL  | 6.701 mL  |
| 10 mM | 0.335 mL | 1.675 mL  | 3.351 mL  |
| 50 mM | 0.067 mL | 0.335 mL  | 0.67 mL   |

Please select the appropriate solvent to prepare the stock solution, according to the solubility of the product in different solvents. The storage conditions and period of the stock solution: - 80 °C for 6 months; - 20 °C for 1 month. Please use it as soon as possible.

## Reference

1. Singh B, et al. Bioanalytical method development and validation of alimemazine in human plasma by LC-MS/MS and its application in bioequivalence studies. J Pharm Bioallied Sci. 2013 Oct;5(4):257-64.
2. Kuznetsova A, et al. Trimeprazine increases IRS2 in human islets and promotes pancreatic  $\beta$  cell growth and function in mice. JCI Insight. 2016;1(3).

Inhibitors · Natural Compounds · Compound Libraries

This product is for Research Use Only · Not for Human or Veterinary or Therapeutic Use.

Tel:781-999-4286

E-mail:[info@targetmol.com](mailto:info@targetmol.com)

Address:36 Washington Street,Wellesley Hills,MA 02481