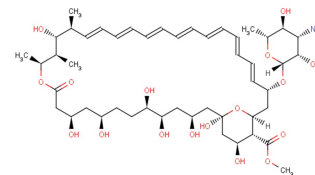


## Amphotericin B methyl ester

## Chemical Properties

CAS No.:	36148-89-7
Formula:	C <sub>48</sub> H <sub>75</sub> NO <sub>17</sub>
Molecular Weight:	938.11
Appearance:	N/A
Storage:	0-4°C for short term (days to weeks), or -20°C for long term (months).



## Biological Description

Description	Amphotericin B methyl ester is the derivative of the antibiotic Amphotericin B. Amphotericin B methyl ester is the cholesterol-binding compound that possesses significant antifungal activity. It disrupts HIV-1 particle production and potently inhibits HIV-1 replication.
Targets(IC <sub>50</sub> )	Others: None
In vitro	Amphotericin B methyl ester inhibits HIV-1 particle production with no significant effect on Gag binding to the plasma membrane, Gag association with lipid rafts, or Gag multimerization [1].

## Solubility Information

Solubility	< 1 mg/ml refers to the product slightly soluble or insoluble
------------	---

## Preparing Stock Solutions

	1mg	5mg	10mg
1 mM	1.066 mL	5.33 mL	10.66 mL
5 mM	0.213 mL	1.066 mL	2.132 mL
10 mM	0.107 mL	0.533 mL	1.066 mL
50 mM	0.021 mL	0.107 mL	0.213 mL

Please select the appropriate solvent to prepare the stock solution, according to the solubility of the product in different solvents. The storage conditions and period of the stock solution: - 80 °C for 6 months; - 20 °C for 1 month. Please use it as soon as possible.

## Reference

1. Waheed AA, et al. Inhibition of human immunodeficiency virus type 1 assembly and release by the cholesterol-binding compound amphotericin B methyl ester: evidence for Vpu dependence. *J Virol.* 2008 Oct;82(19):9776-81.
2. Keim GR, et al. Comparative toxicological studies of amphotericin B methyl ester and amphotericin B in mice, rats, and dogs. *ntimicrob Agents Chemother.* 1976 Oct;10(4):687-90.

Inhibitors · Natural Compounds · Compound Libraries

This product is for Research Use Only · Not for Human or Veterinary or Therapeutic Use.

Tel:781-999-4286

E-mail:[info@targetmol.com](mailto:info@targetmol.com)

Address:36 Washington Street,Wellesley Hills,MA 02481