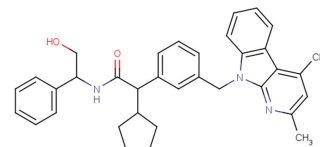


Implitapide Racemate

Chemical Properties

CAS No.:	177277-99-5
Formula:	C ₃₅ H ₃₇ N ₃ O ₂
Molecular Weight:	531.69
Appearance:	N/A
Storage:	0-4°C for short term (days to weeks), or -20°C for long term (months).



Biological Description

Description	Implitapide Racemate is the racemate of Implitapide. Implitapide is an inhibitor of microsomal triglyceride transfer protein (MTP).
Targets(IC ₅₀)	Others: None

Solubility Information

Solubility	< 1 mg/ml refers to the product slightly soluble or insoluble
------------	---

Preparing Stock Solutions

	1mg	5mg	10mg
1 mM	1.881 mL	9.404 mL	18.808 mL
5 mM	0.376 mL	1.881 mL	3.762 mL
10 mM	0.188 mL	0.94 mL	1.881 mL
50 mM	0.038 mL	0.188 mL	0.376 mL

Please select the appropriate solvent to prepare the stock solution, according to the solubility of the product in different solvents. The storage conditions and period of the stock solution: - 80 °C for 6 months; - 20 °C for 1 month. Please use it as soon as possible.

Reference

1. Mueller, Dr. Ulrich, et al. Cycloalkano-indole- and -azaindole derivatives. EP705831A2.

Inhibitors · Natural Compounds · Compound Libraries

This product is for Research Use Only · Not for Human or Veterinary or Therapeutic Use.

Tel:781-999-4286

E-mail:info@targetmol.com

Address:36 Washington Street,Wellesley Hills,MA 02481