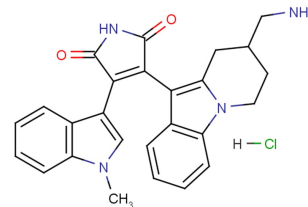


## Bisindolylmaleimide X hydrochloride

## Chemical Properties

|                   |  |
|-------------------|--|
| CAS No.:          | 145317-11-9  |
| Formula:          | C <sub>26</sub> H <sub>25</sub> ClN <sub>4</sub> O <sub>2</sub>        |
| Molecular Weight: | 460.96   |
| Appearance:       | N/A  |
| Storage:          | 0-4°C for short term (days to weeks), or -20°C for long term (months). |



## Biological Description

|                            |   |
|----------------------------|---|
| Description                | Bisindolylmaleimide X hydrochloride (BIM-X hydrochloride) is a potent and selective PKC inhibitor. It is also a potent CDK2 antagonist (IC <sub>50</sub> : 200 nM). |
| Targets(IC <sub>50</sub> ) | PKC: 200 nM<br>CDK2: 200 nM   |

## Solubility Information

|            |   |
|------------|---|
| Solubility | DMSO: 20.83 mg/mL (45.19 mM)<br>(< 1 mg/ml refers to the product slightly soluble or insoluble) |
|------------|---|

## Preparing Stock Solutions

|       | 1mg      | 5mg       | 10mg      |
|-------|----------|-----------|-----------|
| 1 mM  | 2.169 mL | 10.847 mL | 21.694 mL |
| 5 mM  | 0.434 mL | 2.169 mL  | 4.339 mL  |
| 10 mM | 0.217 mL | 1.085 mL  | 2.169 mL  |
| 50 mM | 0.043 mL | 0.217 mL  | 0.434 mL  |

Please select the appropriate solvent to prepare the stock solution, according to the solubility of the product in different solvents. The storage conditions and period of the stock solution: - 80 °C for 6 months; - 20 °C for 1 month. Please use it as soon as possible.

## Reference

1. Brehmer D, et al. Proteome-wide identification of cellular targets affected by bisindolylmaleimide-type protein kinase C inhibitors. Mol Cell Proteomics. 2004 May;3(5):490-500.

Inhibitors · Natural Compounds · Compound Libraries

This product is for Research Use Only · Not for Human or Veterinary or Therapeutic Use.

Tel:781-999-4286

E-mail:[info@targetmol.com](mailto:info@targetmol.com)

Address:36 Washington Street,Wellesley Hills,MA 02481