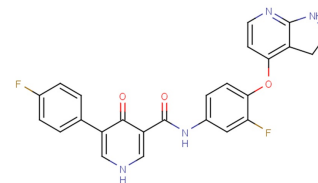


BPI-9016M

Chemical Properties

CAS No.:	1528546-94-2
Formula:	C ₂₅ H ₁₈ F ₂ N ₄ O ₃
Molecular Weight:	460.43
Appearance:	N/A
Storage:	0-4°C for short term (days to weeks), or -20°C for long term (months).



Biological Description

Description	BPI-9016M is an effective, orally active, and selective dual inhibitor of c-Met and AXL tyrosine kinases. It suppresses tumor cell growth, invasion, and migration of lung adenocarcinoma.
Targets(IC ₅₀)	Others: None
In vitro	The IC ₅₀ of BPI-9016M in several lung adenocarcinoma cell lines (A549, H1299, H1650, H1975, HCC827, and PC-9 cells) as well as in primary lung adenocarcinoma cells are ranged from 5.3 μ M to 27.1 μ M. BPI-9016M (3.1-50 μ M) reduces the expression of c-Met, p-c-Met, p-AKT, and p-ERK in the H1299 and A549 cells in a dose-dependent manner. BPI-9016M (6.3-25 μ M; 2 weeks) inhibited cell proliferation. BPI-9016M (12.5-50 μ M; 24 hours) induces the accumulation of more tumor cells in the G1 phase [2].
In vivo	In PDX xenografts in NOD/SCID mice, BPI-9016M (60 mg/kg; p.o.; daily for 16 or 12 days) dramatically restrains tumor growth [2].

Solubility Information

Solubility	< 1 mg/ml refers to the product slightly soluble or insoluble
------------	---

Preparing Stock Solutions

	1mg	5mg	10mg
1 mM	2.172 mL	10.859 mL	21.719 mL
5 mM	0.434 mL	2.172 mL	4.344 mL
10 mM	0.217 mL	1.086 mL	2.172 mL
50 mM	0.043 mL	0.217 mL	0.434 mL

Please select the appropriate solvent to prepare the stock solution, according to the solubility of the product in different solvents. The storage conditions and period of the stock solution: - 80 °C for 6 months; - 20 °C for 1 month. Please use it as soon as possible.

Reference

1. Zhang P, et al. BPI-9016M, a c-Met inhibitor, suppresses tumor cell growth, migration and invasion of lung adenocarcinoma via miR203-DKK1. *Theranostics*. 2018 Nov 12;8(21):5890-5902.
2. Hu X, et al. First-in-human phase I study of BPI-9016M, a dual MET/Axl inhibitor, in patients with non-small cell lung cancer. *J Hematol Oncol*. 2020 Jan 16;13(1):6.

Inhibitors · Natural Compounds · Compound Libraries

This product is for Research Use Only · Not for Human or Veterinary or Therapeutic Use.

Tel:781-999-4286

E-mail:info@targetmol.com

Address:36 Washington Street,Wellesley Hills,MA 02481