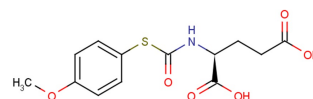


## Carboxypeptidase G2 (CPG2) Inhibitor

## Chemical Properties

CAS No.:	192203-60-4
Formula:	C <sub>13</sub> H <sub>15</sub> NO <sub>6</sub> S
Molecular Weight:	313.33
Appearance:	N/A
Storage:	0-4°C for short term (days to weeks), or -20°C for long term (months).



## Biological Description

Description	Carboxypeptidase G2 (CPG2) Inhibitor is a new CPG2 Inhibitor with antitumor activity.
Targets(IC <sub>50</sub> )	Others: None

## Solubility Information

Solubility	H <sub>2</sub> O: 1.43 mg/mL (4.56 mM) (< 1 mg/ml refers to the product slightly soluble or insoluble)
------------	---

## Preparing Stock Solutions

	1mg	5mg	10mg
1 mM	3.192 mL	15.958 mL	31.915 mL
5 mM	0.638 mL	3.192 mL	6.383 mL
10 mM	0.319 mL	1.596 mL	3.192 mL
50 mM	0.064 mL	0.319 mL	0.638 mL

Please select the appropriate solvent to prepare the stock solution, according to the solubility of the product in different solvents. The storage conditions and period of the stock solution: - 80 °C for 6 months; - 20 °C for 1 month. Please use it as soon as possible.

## Reference

1. Khan, Tariq H.; Eno-Amooquaye, Ebum A.; Searle, Frances et al. Novel Inhibitors of Carboxypeptidase G2 (CPG2): Potential Use in Antibody-Directed Enzyme Prodrug Therapy. *Journal of Medicinal Chemistry* (1999), 42(6), 951-956.
2. Friedlos F, Lehouritis P, Ogilvie L et al. Attenuated Salmonella targets prodrug activating enzyme carboxypeptidase G2 to mouse melanoma and human breast and colon carcinomas for effective suicide gene therapy. *Clin Cancer Res.* 2008 Jul 1;14(13):4259-66.
3. Schepelmann S, Ogilvie LM, Hedley D et al. Suicide gene therapy of human colon carcinoma xenografts using an armed oncolytic adenovirus expressing carboxypeptidase G2. *Cancer Res.* 2007 May 15;67(10):4949-55.
4. Schepelmann S, Hallenbeck P, Ogilvie LM et al. Systemic gene-directed enzyme prodrug therapy of hepatocellular carcinoma using a targeted adenovirus armed with carboxypeptidase G2. *Cancer Res.* 2005 Jun 15;65(12):5003-8.

Inhibitors · Natural Compounds · Compound Libraries

This product is for Research Use Only · Not for Human or Veterinary or Therapeutic Use.

Tel:781-999-4286

E-mail:[info@targetmol.com](mailto:info@targetmol.com)

Address:36 Washington Street,Wellesley Hills,MA 02481