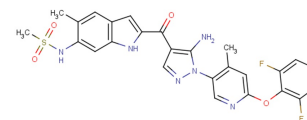


CH6953755

## Chemical Properties

CAS No.:	2055918-71-1
Formula:	C <sub>26</sub> H <sub>22</sub> F <sub>2</sub> N <sub>6</sub> O <sub>4</sub> S
Molecular Weight:	552.55
Appearance:	N/A
Storage:	0-4°C for short term (days to weeks), or -20°C for long term (months).



## Biological Description

Description	CH6953755 is a potent, orally active and selective inhibitor of YES1 kinase (IC <sub>50</sub> : 1.8 nM). It inhibits YES1 kinase, leading to antitumor activity against YES1 Gene -amplified cancers in vitro and in vivo.
Targets(IC <sub>50</sub> )	YES1: 1.8 nM
In vitro	CH6953755 (0.001-1 μM; for 2 hours) prevents the autophosphorylation at Tyr426 of YES1 that upregulates enzymatic activity in KYSE70 cells harboring YES1 amplification. CH6953755 (0.001-1 μM; for 4 days) inhibits the cell growth of YES1-amplified cancer cell lines. CH6953755 (0.1, 0.3, 1, 3 μM) suppresses TEAD luciferase reporter activity in YES1-amplified KYSE70 and RERF-LC-AI.
In vivo	CH6953755 (p.o.; 7.5, 15, 30, 60 mg/kg) suppresses phospho-Tyr426 YES1 in a dose-dependent manner. CH6953755 (p.o.; 60 mg/kg/day; for 10 days) shows selective antitumor activity accompanied with phospho-Tyr426 YES1 suppression in xenograft tumors.

## Solubility Information

Solubility	< 1 mg/ml refers to the product slightly soluble or insoluble
------------	---

### Preparing Stock Solutions

	1mg	5mg	10mg
1 mM	1.81 mL	9.049 mL	18.098 mL
5 mM	0.362 mL	1.81 mL	3.62 mL
10 mM	0.181 mL	0.905 mL	1.81 mL
50 mM	0.036 mL	0.181 mL	0.362 mL

Please select the appropriate solvent to prepare the stock solution, according to the solubility of the product in different solvents. The storage conditions and period of the stock solution: - 80 °C for 6 months; - 20 °C for 1 month. Please use it as soon as possible.

### Reference

1. Hamanaka N, et al. YES1 Is a Targetable Oncogene in Cancers Harboring YES1 Gene Amplification. Cancer Res. 2019 Nov 15;79(22):5734-5745.

Inhibitors · Natural Compounds · Compound Libraries

This product is for Research Use Only · Not for Human or Veterinary or Therapeutic Use.

Tel:781-999-4286

E-mail:[info@targetmol.com](mailto:info@targetmol.com)

Address:36 Washington Street,Wellesley Hills,MA 02481