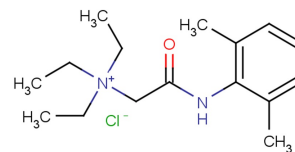


## Data Sheet (Cat.No.T10924)

### Cysteine protease inhibitor-2

#### Chemical Properties

CAS No.:	612048-23-4
Formula:	C <sub>13</sub> H <sub>5</sub> N <sub>5</sub> O
Molecular Weight:	247.21
Appearance:	N/A
Storage:	0-4°C for short term (days to weeks), or -20°C for long term (months).



#### Biological Description

Description	Cysteine protease inhibitor 2 is a cysteine protease inhibitor extracted from patent US20070032499A1, compound 12. Cysteine protease inhibitor 2 inhibited DCT116 and PC3 cells with GI <sub>50</sub> values of 6.5 μM and 4.4 μM, respectively.
Targets(IC <sub>50</sub> )	Cysteine protease: None

#### Solubility Information

Solubility	< 1 mg/ml refers to the product slightly soluble or insoluble
------------	---

#### Preparing Stock Solutions

	1mg	5mg	10mg
1 mM	4.045 mL	20.226 mL	40.451 mL
5 mM	0.809 mL	4.045 mL	8.09 mL
10 mM	0.405 mL	2.023 mL	4.045 mL
50 mM	0.081 mL	0.405 mL	0.809 mL

Please select the appropriate solvent to prepare the stock solution, according to the solubility of the product in different solvents. The storage conditions and period of the stock solution: - 80 °C for 6 months; - 20 °C for 1 month. Please use it as soon as possible.

#### Reference

- Philippe Guedat, et al. Novel cysteine protease inhibitors and their therapeutic applications. US20070032499A1.

Inhibitors · Natural Compounds · Compound Libraries

This product is for Research Use Only · Not for Human or Veterinary or Therapeutic Use.

Tel:781-999-4286

E-mail:[info@targetmol.com](mailto:info@targetmol.com)

Address:36 Washington Street,Wellesley Hills,MA 02481