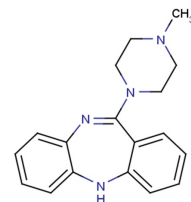


Deschloroclozapine

Chemical Properties

CAS No.:	1977-07-7
Formula:	C ₁₈ H ₂₀ N ₄
Molecular Weight:	292.38
Appearance:	N/A
Storage:	0-4°C for short term (days to weeks), or -20°C for long term (months).



Biological Description

Description	Deschloroclozapine is an effective selective chemical generation actuator. Decloclopine is a dual antagonist of dopamine and serotonin receptors. The Kis of dopamine D1, D2, D4 and serotonin S2A, S2C, S3 are 200, 2500, 420, 39, 84, 40 nM. Deschloroclozapine is also a selective, high-affinity, metabolically stable and brain-penetrable Designer Designer receptor, which is exclusively activated by Designer Drug (DREADD) agonists.
Targets(IC ₅₀)	Dopamine D1: ki:200 nM Dopamine D2: 2500 nM (ki) Dopamine D4: 420 nM (ki) Serotonin S2A: 39 nM (ki) Serotonin S2C: 84 nM (ki) Serotonin S3: 200 nM (ki)

Solubility Information

Solubility	DMSO: 83.3 mg/mL (284.90 mM) (< 1 mg/ml refers to the product slightly soluble or insoluble)
------------	--

Preparing Stock Solutions

	1mg	5mg	10mg
1 mM	3.42 mL	17.101 mL	34.202 mL
5 mM	0.684 mL	3.42 mL	6.84 mL
10 mM	0.342 mL	1.71 mL	3.42 mL
50 mM	0.068 mL	0.342 mL	0.684 mL

Please select the appropriate solvent to prepare the stock solution, according to the solubility of the product in different solvents. The storage conditions and period of the stock solution: - 80 °C for 6 months; - 20 °C for 1 month. Please use it as soon as possible.

Reference

1. Phillips ST, et al. Binding of 5H-dibenzo[b,e][1,4]diazepine and chiral 5H-dibenzo[a,d]cycloheptene analogues of clozapine to dopamine and serotonin receptors. J Med Chem. 1994 Aug 19;37(17):2686-96.
2. Yuji Nagai, et al. Deschloroclozapine: a potent and selective chemogenetic actuator enables rapid neuronal and behavioral modulations in mice and monkeys. bioRxiv.

Inhibitors · Natural Compounds · Compound Libraries

This product is for Research Use Only · Not for Human or Veterinary or Therapeutic Use.

Tel:781-999-4286

E-mail:info@targetmol.com

Address:36 Washington Street,Wellesley Hills,MA 02481