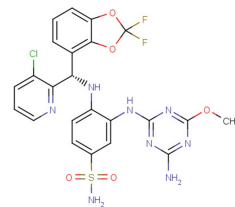


## Dot1L-IN-5

## Chemical Properties

CAS No.:	T11084
Formula:	C <sub>23</sub> H <sub>19</sub> ClF <sub>2</sub> N <sub>8</sub> O <sub>5</sub> S
Molecular Weight:	592.96
Appearance:	N/A
Storage:	0-4°C for short term (days to weeks), or -20°C for long term (months).



## Biological Description

Description	Dot1L-IN-5 is a potent disruptor of telomeric silencing 1-like protein (DOT1L) inhibitor with an IC <sub>50</sub> SPA DOT1L of 0.17 nM.
Targets(IC <sub>50</sub> )	DOT1L: 0.17 nM
In vitro	In cell experiments, dot1L-in-5 inhibited H3K79 dimethylation IN HeLa cells (ED <sub>50</sub> H3K79me2 Elisa=2.9 nM) and HOXA9 gene expression IN MOLM-13 cells (ED <sub>50</sub> HOXA9 RGA=30 nM).
In vivo	Dot1L-in-5 (subcutaneous injection;In NOD-SCID mice, 75 mg/kg once daily for 20 days did not cause tumor growth inhibition.Dot1L-in-5 (subcutaneous injection;At 75 mg/kg, twice daily for 20 consecutive days) resulted in 73% of growth inhibition.Both treatments had a strong inhibitory effect on the overall H3K79 dimethylation level of the tumor, but the effective treatment had more advantages in reducing the mRNA expression of target genes HOXA9 and MEIS1.

## Solubility Information

Solubility	< 1 mg/ml refers to the product slightly soluble or insoluble
------------	---

## Preparing Stock Solutions

	1mg	5mg	10mg
1 mM	1.686 mL	8.432 mL	16.865 mL
5 mM	0.337 mL	1.686 mL	3.373 mL
10 mM	0.169 mL	0.843 mL	1.686 mL
50 mM	0.034 mL	0.169 mL	0.337 mL

Please select the appropriate solvent to prepare the stock solution, according to the solubility of the product in different solvents. The storage conditions and period of the stock solution: - 80 °C for 6 months; - 20 °C for 1 month. Please use it as soon as possible.

## Reference

1. Frédéric Stauffer, et al. New Potent DOT1L Inhibitors for in Vivo Evaluation in Mouse. ACS Med. Chem. Lett. 2019, 10, 12, 1655-1660.

Inhibitors · Natural Compounds · Compound Libraries

This product is for Research Use Only · Not for Human or Veterinary or Therapeutic Use.

Tel:781-999-4286

E-mail:[info@targetmol.com](mailto:info@targetmol.com)

Address:36 Washington Street,Wellesley Hills,MA 02481