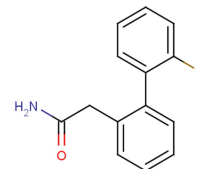


DSP-0565

**Chemical Properties**

|                   |  |
|-------------------|--|
| CAS No.:          | 1226855-28-2   |
| Formula:          | C <sub>14</sub> H <sub>12</sub> FNO                                    |
| Molecular Weight: | 229.25   |
| Appearance:       | N/A  |
| Storage:          | 0-4°C for short term (days to weeks), or -20°C for long term (months). |

**Biological Description**

|                            |   |
|----------------------------|---|
| Description                | DSP-0565 shows anti-convulsant activity in various models (scPTZ, MES, 6 Hz and amygdala kindling) with good safety margin. DSP-0565 (compound 17a) is a strong, broad-spectrum anti-epileptic drug (AED) candidate with unique GABAergic function. |
| Targets(IC <sub>50</sub> ) | Others: None  |

**Solubility Information**

|            |   |
|------------|---|
| Solubility | < 1 mg/ml refers to the product slightly soluble or insoluble |
|------------|---|

## Preparing Stock Solutions

|       | 1mg      | 5mg      | 10mg      |
|-------|----------|----------|-----------|
| 1 mM  | 4.362 mL | 21.81 mL | 43.621 mL |
| 5 mM  | 0.872 mL | 4.362 mL | 8.724 mL  |
| 10 mM | 0.436 mL | 2.181 mL | 4.362 mL  |
| 50 mM | 0.087 mL | 0.436 mL | 0.872 mL  |

Please select the appropriate solvent to prepare the stock solution, according to the solubility of the product in different solvents. The storage conditions and period of the stock solution: - 80 °C for 6 months; - 20 °C for 1 month. Please use it as soon as possible.

## Reference

1. Tanaka T, et al. Identification of 2-(2'-fluoro-[1,1'-biphenyl]-2-yl)acetamide as a Sodium Valproate-like broad spectrum anti-epileptic drug candidate. Bioorg Med Chem Lett. 2019 Jan 15;29(2):138-142.

Inhibitors · Natural Compounds · Compound Libraries

This product is for Research Use Only · Not for Human or Veterinary or Therapeutic Use.

Tel:781-999-4286

E-mail:[info@targetmol.com](mailto:info@targetmol.com)

Address:36 Washington Street,Wellesley Hills,MA 02481