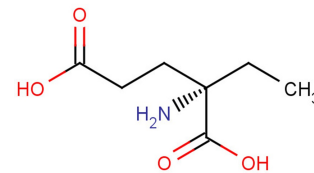


EGLU

## Chemical Properties

CAS No.:	170984-72-2
Formula:	C7H13NO4
Molecular Weight:	175.18
Appearance:	N/A
Storage:	0-4°C for short term (days to weeks), or -20°C for long term (months).



## Biological Description

Description	EGLU interacts with (1S,3S)-ACPD-sensitive site with a Kd value of 66 $\mu$ M. EGLU is an antidepressant agent. EGLU ((2S)- $\alpha$ -Ethylglutamic acid; (2S)- $\alpha$ -EGLU) is a potent and competitive mGluR-2 receptor antagonist.
Targets(IC <sub>50</sub> )	Others: None
In vitro	EGLU displaying little or no antagonist activity versus L-AP6 induced depressions or on the DRVRP alone. EGLU (200 $\mu$ M) selectively antagonizes -ACPD-induced depressions of the monosynaptic component of the DRVRP.

## Solubility Information

Solubility	< 1 mg/ml refers to the product slightly soluble or insoluble
------------	---

### Preparing Stock Solutions

	1mg	5mg	10mg
1 mM	5.708 mL	28.542 mL	57.084 mL
5 mM	1.142 mL	5.708 mL	11.417 mL
10 mM	0.571 mL	2.854 mL	5.708 mL
50 mM	0.114 mL	0.571 mL	1.142 mL

Please select the appropriate solvent to prepare the stock solution, according to the solubility of the product in different solvents. The storage conditions and period of the stock solution: - 80 °C for 6 months; - 20 °C for 1 month. Please use it as soon as possible.

### Reference

1. Jane DE, et al. Potent antagonists at the L-AP4- and (1S,3S)-ACPD-sensitive presynaptic metabotropic glutamate receptors in the neonatal rat spinal cord. *Neuropharmacology*. 1996;35(8):1029-35.

Inhibitors · Natural Compounds · Compound Libraries

This product is for Research Use Only · Not for Human or Veterinary or Therapeutic Use.

Tel:781-999-4286

E-mail:[info@targetmol.com](mailto:info@targetmol.com)

Address:36 Washington Street,Wellesley Hills,MA 02481