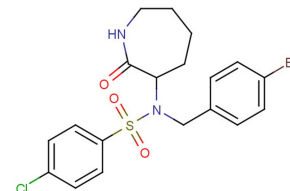


ELN 318463 racemate

Chemical Properties

CAS No.:	851599-82-1
Formula:	C ₁₉ H ₂₀ BrClN ₂ O ₃ S
Molecular Weight:	471.8
Appearance:	N/A
Storage:	0-4°C for short term (days to weeks), or -20°C for long term (months).



Biological Description

Description	ELN 318463 shows differential inhibition of presenilin (PS1)- and PS2-comprised γ -secretase with EC ₅₀ s of 12nM and 656 nM for PS1 and PS2, respectively. ELN318463 is 51-fold more selective for PS1. ELN 318463 racemate is the racemate of ELN 318463. ELN 318463 is an amyloid precursor protein (APP) selective γ -secretase inhibitor.
Targets(IC ₅₀)	γ -secretase: None
In vitro	ELN318463 is a typical xanthocervase inhibitor, which can only replace the active site-oriented inhibitor at very high concentrations in the presence of substrates. Compared with Notch signaling, ELN318463 is 75-120 times more selective in inhibiting acetaminophen production in cells.
In vivo	Brain levels of ELN318463 at 30 mg/kg are 0.754 μ M in FVB brains and 0.69 μ M in PDAPP brains, and at 100 mg/kg dose the levels were 2.7 μ M in FVB brains and 1.87 μ M in PDAPP brains.

Solubility Information

Solubility	< 1 mg/ml refers to the product slightly soluble or insoluble
------------	---

Preparing Stock Solutions

	1mg	5mg	10mg
1 mM	2.12 mL	10.598 mL	21.195 mL
5 mM	0.424 mL	2.12 mL	4.239 mL
10 mM	0.212 mL	1.06 mL	2.12 mL
50 mM	0.042 mL	0.212 mL	0.424 mL

Please select the appropriate solvent to prepare the stock solution, according to the solubility of the product in different solvents. The storage conditions and period of the stock solution: - 80 °C for 6 months; - 20 °C for 1 month. Please use it as soon as possible.

Reference

1. Zhao B, et al. Identification of gamma-secretase inhibitor potency determinants on presenilin. J Biol Chem. 2008 Feb 1;283(5):2927-38.
2. Basi GS, et al. Amyloid precursor protein selective gamma-secretase inhibitors for treatment of Alzheimer's disease. Alzheimers Res Ther. 2010 Dec 29;2(6):36.

Inhibitors · Natural Compounds · Compound Libraries

This product is for Research Use Only · Not for Human or Veterinary or Therapeutic Use.

Tel:781-999-4286

E-mail:info@targetmol.com

Address:36 Washington Street,Wellesley Hills,MA 02481