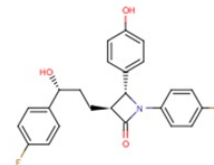


## ent-Ezetimibe

## Chemical Properties

CAS No.:	1376614-99-1
Formula:	C <sub>24</sub> H <sub>21</sub> F <sub>2</sub> NO <sub>3</sub>
Molecular Weight:	409.43
Appearance:	N/A
Storage:	0-4°C for short term (days to weeks), or -20°C for long term (months).



## Biological Description

Description	Ezetimibe is a Niemann-Pick C1-like1 (NPC1L1) inhibitor, and is a potent Nrf2 activator.ent-Ezetimibe (ent-SCH 58235) is the RRS-enantiomer of Ezetimibe. Ezetimibe is a potent cholesterol absorption inhibitor.
Targets(IC <sub>50</sub> )	Others: None

## Solubility Information

Solubility	< 1 mg/ml refers to the product slightly soluble or insoluble
------------	---

## Preparing Stock Solutions

	1mg	5mg	10mg
1 mM	2.442 mL	12.212 mL	24.424 mL
5 mM	0.488 mL	2.442 mL	4.885 mL
10 mM	0.244 mL	1.221 mL	2.442 mL
50 mM	0.049 mL	0.244 mL	0.488 mL

Please select the appropriate solvent to prepare the stock solution, according to the solubility of the product in different solvents. The storage conditions and period of the stock solution: - 80 °C for 6 months; - 20 °C for 1 month. Please use it as soon as possible.

## Reference

1. Lee DH, et al. Ezetimibe, an NPC1L1 inhibitor, is a potent Nrf2 activator that protects mice from diet-induced nonalcoholic steatohepatitis. *Free Radic Biol Med.* 2016 Sep 12;99:520-532.
2. Yijun Zhu, et al. Efficient and scalable process for the synthesis of antihypercholesterolemic drug ezetimibe. *An International Journal for Rapid Communication of Synthetic Organic Chemistry*

Inhibitors · Natural Compounds · Compound Libraries

This product is for Research Use Only · Not for Human or Veterinary or Therapeutic Use.

Tel:781-999-4286

E-mail:[info@targetmol.com](mailto:info@targetmol.com)

Address:36 Washington Street,Wellesley Hills,MA 02481