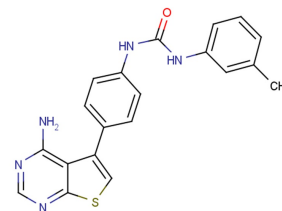


GDP366

Chemical Properties

CAS No.:	501698-03-9
Formula:	C ₂₀ H ₁₇ N ₅ O ₂ S
Molecular Weight:	375.45
Appearance:	N/A
Storage:	0-4°C for short term (days to weeks), or -20°C for long term (months).

**Biological Description**

Description	GDP366, induces cell growth inhibition, cellular senescence and mitotic catastrophe in human cancer cells. a dual inhibitor of survivin and Op18.
Targets(IC ₅₀)	Survivin: None
In vitro	GDP366 significantly inhibits the growth of tumor cells in vitro and in vivo (nude mouse model) without rapid induction of apoptosis. GDP366 induces polyploidy in multiple types of cancer cell lines. GDP366 increases chromosomal instability, and induces cellular senescence by inhibiting telomerase activity. GDP366 potently and selectively inhibits the expression of both survivin and Op18. GDP366 decreases both the mRNA and protein levels of survivin and Op18. This inhibitory effect is not dependent on the status of p53 and p21 although GDP366 potently increases p53 and p21 levels.

Solubility Information

Solubility	DMSO: 62.5 mg/mL (166.47 mM) (< 1 mg/ml refers to the product slightly soluble or insoluble)
------------	--

Preparing Stock Solutions

	1mg	5mg	10mg
1 mM	2.663 mL	13.317 mL	26.635 mL
5 mM	0.533 mL	2.663 mL	5.327 mL
10 mM	0.266 mL	1.332 mL	2.663 mL
50 mM	0.053 mL	0.266 mL	0.533 mL

Please select the appropriate solvent to prepare the stock solution, according to the solubility of the product in different solvents. The storage conditions and period of the stock solution: - 80 °C for 6 months; - 20 °C for 1 month. Please use it as soon as possible.

Reference

1. Shi X, et al. GDP366, a novel small molecule dual inhibitor of survivin and Op18, induces cell growth inhibition, cellular senescence and mitotic catastrophe in human cancer cells. Cancer Biol Ther. 2010 Apr 15;9(8):640-50.

Inhibitors · Natural Compounds · Compound Libraries

This product is for Research Use Only · Not for Human or Veterinary or Therapeutic Use.

Tel:781-999-4286

E-mail:info@targetmol.com

Address:36 Washington Street,Wellesley Hills,MA 02481