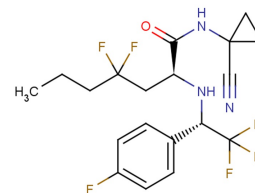


## Cathepsin Inhibitor 2

## Chemical Properties

CAS No.:	1017931-53-1
Formula:	C <sub>19</sub> H <sub>21</sub> F <sub>6</sub> N <sub>3</sub> O
Molecular Weight:	421.38
Appearance:	N/A
Storage:	0-4°C for short term (days to weeks), or -20°C for long term (months).



## Biological Description

Description	Cathepsin Inhibitor 2 is a potent Cathepsin S inhibitor (K <sub>i</sub> : <20 nM).
Targets(IC <sub>50</sub> )	Cathepsin S(k <sub>i</sub> ): k <sub>i</sub> :<20 nM
In vitro	Cathepsin Inhibitor 2 potently inhibits Cathepsin S, Cathepsin F, Cathepsin L, and Cathepsin B (K <sub>i</sub> s: <20 nM, 21-500 nM, 21-500 nM, and 21-500 nM).

## Solubility Information

Solubility	< 1 mg/ml refers to the product slightly soluble or insoluble
------------	---

## Preparing Stock Solutions

	1mg	5mg	10mg
1 mM	2.373 mL	11.866 mL	23.732 mL
5 mM	0.475 mL	2.373 mL	4.746 mL
10 mM	0.237 mL	1.187 mL	2.373 mL
50 mM	0.047 mL	0.237 mL	0.475 mL

Please select the appropriate solvent to prepare the stock solution, according to the solubility of the product in different solvents. The storage conditions and period of the stock solution: - 80 °C for 6 months; - 20 °C for 1 month. Please use it as soon as possible.

## Reference

1. LINK, John, O, et al. DI-FLUORO CONTAINING COMPOUNDS AS CYSTEINE PROTEASE INHIBITORS. WO2009123623A1.

Inhibitors · Natural Compounds · Compound Libraries

This product is for Research Use Only · Not for Human or Veterinary or Therapeutic Use.

Tel:781-999-4286

E-mail:[info@targetmol.com](mailto:info@targetmol.com)

Address:36 Washington Street,Wellesley Hills,MA 02481