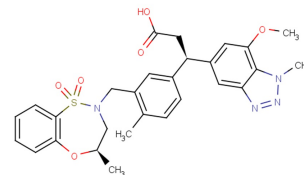


KI696 isomer

Chemical Properties

CAS No.:	1799974-69-8
Formula:	C ₂₈ H ₃₀ N ₄ O ₆ S
Molecular Weight:	550.63
Appearance:	N/A
Storage:	0-4°C for short term (days to weeks), or -20°C for long term (months).



Biological Description

Description	KI696 is a high affinity probe that disrupts the Keap1/NRF2 interaction. KI696 isomer is the less active isomer of KI696 .
Targets(IC ₅₀)	Others: None

Solubility Information

Solubility	DMSO: 125 mg/mL (227.01 mM) (< 1 mg/ml refers to the product slightly soluble or insoluble)
------------	--

Preparing Stock Solutions

	1mg	5mg	10mg
1 mM	1.816 mL	9.081 mL	18.161 mL
5 mM	0.363 mL	1.816 mL	3.632 mL
10 mM	0.182 mL	0.908 mL	1.816 mL
50 mM	0.036 mL	0.182 mL	0.363 mL

Please select the appropriate solvent to prepare the stock solution, according to the solubility of the product in different solvents. The storage conditions and period of the stock solution: - 80 °C for 6 months; - 20 °C for 1 month. Please use it as soon as possible.

Reference

1. Davies TG, et al. Monoacidic Inhibitors of the Kelch-like ECH-Associated Protein 1: Nuclear Factor Erythroid 2-Related Factor 2 (KEAP1:NRF2) Protein-Protein Interaction with High Cell Potency Identified by Fragment-Based Discovery. J Med Chem. 2016 Apr 28;59(8):3991-4006.

Inhibitors · Natural Compounds · Compound Libraries

This product is for Research Use Only · Not for Human or Veterinary or Therapeutic Use.

Tel:781-999-4286

E-mail:info@targetmol.com

Address:36 Washington Street,Wellesley Hills,MA 02481