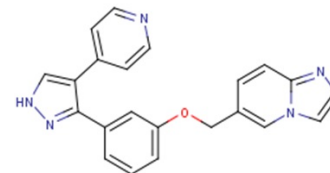


LoICDE-IN-2

**Chemical Properties**

CAS No.:	T11866
Formula:	C <sub>22</sub> H <sub>17</sub> N <sub>5</sub> O
Molecular Weight:	367.4
Appearance:	N/A
Storage:	0-4°C for short term (days to weeks), or -20°C for long term (months).

**Biological Description**

Description	LoICDE-IN-2 inhibits E. coli MG1655 with a MIC of 2 µg/ml. Antibacterial activity. LoICDE-IN-2 is a potent Lol protein inhibitor.
Targets(IC <sub>50</sub> )	Others: None
In vitro	The P. aeruginosa ΔloICDE::CTX-loICDEE. colist strain becomes more susceptible to LoICDE-IN-2 when either the MexAB-OprM efflux pump is lacking or the permeability of its OM is increased by the expression of the FpvA-ΔP protein; in each case, these strains show an MIC of 16 µg/ml[1].

**Solubility Information**

Solubility	< 1 mg/ml refers to the product slightly soluble or insoluble
------------	---

## Preparing Stock Solutions

	1mg	5mg	10mg
1 mM	2.722 mL	13.609 mL	27.218 mL
5 mM	0.544 mL	2.722 mL	5.444 mL
10 mM	0.272 mL	1.361 mL	2.722 mL
50 mM	0.054 mL	0.272 mL	0.544 mL

Please select the appropriate solvent to prepare the stock solution, according to the solubility of the product in different solvents. The storage conditions and period of the stock solution: - 80 °C for 6 months; - 20 °C for 1 month. Please use it as soon as possible.

## Reference

1. Christian Lorenz, et al. Correct Sorting of Lipoproteins into the Inner and Outer Membranes of Pseudomonas aeruginosa by the Escherichia coli LoICDE Transport System. Molecular Biology and Physiology.

Inhibitors · Natural Compounds · Compound Libraries

This product is for Research Use Only · Not for Human or Veterinary or Therapeutic Use.

Tel:781-999-4286

E-mail:[info@targetmol.com](mailto:info@targetmol.com)

Address:36 Washington Street,Wellesley Hills,MA 02481