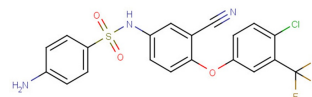


Lp-PLA2-IN-3

Chemical Properties

CAS No.:	2196245-16-4
Formula:	C ₂₀ H ₁₃ ClF ₃ N ₃ O ₃ S
Molecular Weight:	467.85
Appearance:	N/A
Storage:	0-4°C for short term (days to weeks), or -20°C for long term (months).



Biological Description

Description	Lp-PLA2-IN-3 is a potent and orally bioavailable lipoprotein-associated phospholipase A2 (Lp-PLA2) inhibitor, with an IC ₅₀ of 14 nM for recombinant human Lp-PLA2 .
Targets(IC ₅₀)	Others: None
In vivo	Lp-PLA2-IN-3 (1 mg/kg; i.v.) treatment shows the CL, Vss, and t _{1/2} were 3.1mL/min/kg, 0.3 L/kg, 4 hours, respectively[1].Lp-PLA2-IN-3 (3 mg/kg; p.o.) treatment shows the C _{max} , AUC _{0-24h} , t _{1/2} and F were 0.27 µg/mL, 3.4 µg h/mL, 7.7 hours and 35.5%, respectively[1].

Solubility Information

Solubility	DMSO: 250 mg/mL (534.36 mM) (< 1 mg/ml refers to the product slightly soluble or insoluble)
------------	---

Preparing Stock Solutions

	1mg	5mg	10mg
1 mM	2.137 mL	10.687 mL	21.374 mL
5 mM	0.427 mL	2.137 mL	4.275 mL
10 mM	0.214 mL	1.069 mL	2.137 mL
50 mM	0.043 mL	0.214 mL	0.427 mL

Please select the appropriate solvent to prepare the stock solution, according to the solubility of the product in different solvents. The storage conditions and period of the stock solution: - 80 °C for 6 months; - 20 °C for 1 month. Please use it as soon as possible.

Reference

1. Liu Q, et al. Structure-Guided Discovery of Novel, Potent, and Orally Bioavailable Inhibitors of Lipoprotein-Associated Phospholipase A2. J Med Chem. 2017 Dec 28;60(24):10231-10244.

Inhibitors · Natural Compounds · Compound Libraries

This product is for Research Use Only · Not for Human or Veterinary or Therapeutic Use.

Tel:781-999-4286

E-mail:info@targetmol.com

Address:36 Washington Street,Wellesley Hills,MA 02481