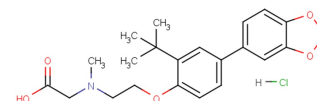


LY2365109 hydrochloride

Chemical Properties

CAS No.: 1779796-27-8
Formula: C₂₂H₂₈ClNO₅
Molecular Weight: 421.91
Appearance: N/A
Storage: 0-4°C for short term (days to weeks), or -20°C for long term (months).

**Biological Description**

Description	LY2365109 hydrochloride is a potent and selective GlyT1 inhibitor, with an IC ₅₀ of 15.8 nM for glycine uptake in cells over-expressing hGlyT1a.
Targets(IC ₅₀)	hGlyT1: 15.8 nM nM
In vivo	LY2365109 hydrochloride increases seizure thresholds in mice[2].LY2365109 hydrochloride (0.3-30 mg/kg; p.o.) produces dose-dependent elevations in CSF levels of glycine[1].

Solubility Information

Solubility	DMSO: 31 mg/mL (73.48 mM) (< 1 mg/ml refers to the product slightly soluble or insoluble)
------------	---

Preparing Stock Solutions

	1mg	5mg	10mg
1 mM	2.37 mL	11.851 mL	23.702 mL
5 mM	0.474 mL	2.37 mL	4.74 mL
10 mM	0.237 mL	1.185 mL	2.37 mL
50 mM	0.047 mL	0.237 mL	0.474 mL

Please select the appropriate solvent to prepare the stock solution, according to the solubility of the product in different solvents. The storage conditions and period of the stock solution: - 80 °C for 6 months; - 20 °C for 1 month. Please use it as soon as possible.

Reference

1. Perry KW et al. Neurochemical and behavioral profiling of the selective GlyT1 inhibitors ALX5407 and LY2365109 indicate a preferential action in caudal vs. cortical brain areas. *Neuropharmacology*. 2008 Oct;55(5):743-54.
2. Shen HY et al. Glycine transporter 1 is a target for the treatment of epilepsy. *Neuropharmacology*. 2015 Dec;99:554-65.

Inhibitors · Natural Compounds · Compound Libraries

This product is for Research Use Only · Not for Human or Veterinary or Therapeutic Use.

Tel:781-999-4286

E-mail:info@targetmol.com

Address:36 Washington Street,Wellesley Hills,MA 02481