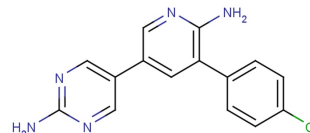


## MAP4K4-IN-3

## Chemical Properties

CAS No.:	1811510-58-3
Formula:	C <sub>15</sub> H <sub>12</sub> ClN <sub>5</sub>
Molecular Weight:	297.74
Appearance:	N/A
Storage:	0-4°C for short term (days to weeks), or -20°C for long term (months).



## Biological Description

Description	MAP4K4 may be a viable target for antidiabetic agents, a serine/threonine protein kinase.
Targets(IC <sub>50</sub> )	MAP4K4: 14.9 nM
In vitro	MAP4K4-IN-3, Antidiabetic agent. MAP4K4-IN-3 is a potent and selective MAP4K4 inhibitor with an IC <sub>50</sub> of 14.9 nM in kinase assay, an IC <sub>50</sub> of 470 nM in cell assay.
In vivo	Oral dosing in telemetered rats for 5 days with MAP4K4-IN-3 (Compound 2; 25 mg/kg, b.i.d.) results in a number of adverse effects. For cardiovascular end points, maximal heart rate increases of 25 bpm, relative to controls, are induced by treatment with MAP4K4-IN-3[2]. Substantial weight losses (7%) and body temperature increases (0.4°C) relative to controls are observed over the course of the study.

## Solubility Information

Solubility	< 1 mg/ml refers to the product slightly soluble or insoluble
------------	---

## Preparing Stock Solutions

	1mg	5mg	10mg
1 mM	3.359 mL	16.793 mL	33.586 mL
5 mM	0.672 mL	3.359 mL	6.717 mL
10 mM	0.336 mL	1.679 mL	3.359 mL
50 mM	0.067 mL	0.336 mL	0.672 mL

Please select the appropriate solvent to prepare the stock solution, according to the solubility of the product in different solvents. The storage conditions and period of the stock solution: - 80 °C for 6 months; - 20 °C for 1 month. Please use it as soon as possible.

## Reference

1. Ammirati M, et al. Discovery of an in Vivo Tool to Establish Proof-of-Concept for MAP4K4-Based Antidiabetic Treatment. ACS Med Chem Lett. 2015 Oct 6;6(11):1128-33.
2. Dow RL, et al. 2-Aminopyridine-Based Mitogen-Activated Protein Kinase Kinase Kinase 4 (MAP4K4) Inhibitors: Assessment of Mechanism-Based Safety. J Med Chem. 2018 Apr 12;61(7):3114-3125.

Inhibitors · Natural Compounds · Compound Libraries

This product is for Research Use Only · Not for Human or Veterinary or Therapeutic Use.

Tel:781-999-4286

E-mail:[info@targetmol.com](mailto:info@targetmol.com)

Address:36 Washington Street,Wellesley Hills,MA 02481