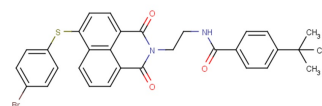


MCL-1/BCL-2-IN-1

Chemical Properties

CAS No.: T11968
Formula: C₃₁H₂₇BrN₂O₃S
Molecular Weight: 587.53
Appearance: N/A
Storage: 0-4°C for short term (days to weeks), or -20°C for long term (months).



Biological Description

Description	MCL-1/BCL-2-IN-2 is a selective and potent Mcl-1 and Bcl-2 dual inhibitor with IC ₅₀ s of 4.45 and 3.18 μ M, respectively.
Targets(IC ₅₀)	Mcl-1: 4.45 μ M Bcl-2: 3.18 μ M

Solubility Information

Solubility	DMSO: 10 mg/mL (17.02 mM) (< 1 mg/ml refers to the product slightly soluble or insoluble)
------------	--

Preparing Stock Solutions

	1mg	5mg	10mg
1 mM	1.702 mL	8.51 mL	17.02 mL
5 mM	0.34 mL	1.702 mL	3.404 mL
10 mM	0.17 mL	0.851 mL	1.702 mL
50 mM	0.034 mL	0.17 mL	0.34 mL

Please select the appropriate solvent to prepare the stock solution, according to the solubility of the product in different solvents. The storage conditions and period of the stock solution: - 80 °C for 6 months; - 20 °C for 1 month. Please use it as soon as possible.

Reference

1. Wang Z, et al. Proteolysis Targeting Chimeras for the Selective Degradation of Mcl-1/Bcl-2 Derived from Nonselective Target Binding Ligands. J Med Chem. 2019 Sep 12;62(17):8152-8163.

Inhibitors · Natural Compounds · Compound Libraries

This product is for Research Use Only · Not for Human or Veterinary or Therapeutic Use.

Tel:781-999-4286

E-mail:info@targetmol.com

Address:36 Washington Street,Wellesley Hills,MA 02481