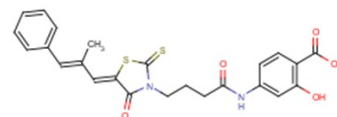


ML 145

Chemical Properties

CAS No.: 1164500-72-4
Formula: C₂₄H₂₂N₂O₅S₂
Molecular Weight: 482.57
Appearance: N/A
Storage: 0-4°C for short term (days to weeks), or -20°C for long term (months).

**Biological Description**

Description	ML 145 is a selective antagonist of GPR35/CXCR8 (IC ₅₀ /EC ₅₀ of 20.1 nM)
Targets(IC ₅₀)	CXCR8: 20.1 nM

Solubility Information

Solubility	< 1 mg/ml refers to the product slightly soluble or insoluble
------------	---

Preparing Stock Solutions

	1mg	5mg	10mg
1 mM	2.072 mL	10.361 mL	20.722 mL
5 mM	0.414 mL	2.072 mL	4.144 mL
10 mM	0.207 mL	1.036 mL	2.072 mL
50 mM	0.041 mL	0.207 mL	0.414 mL

Please select the appropriate solvent to prepare the stock solution, according to the solubility of the product in different solvents. The storage conditions and period of the stock solution: - 80 °C for 6 months; - 20 °C for 1 month. Please use it as soon as possible.

Reference

- Heynen-Genel S, et al. Selective GPR35 Antagonists - Probes 1 & 2. National Center for Biotechnology Information (US); 2010-2010 Feb 28.
- Binti Mohd Amir NAS, et al. Evidence for the Existence of a CXCL17 Receptor Distinct from GPR35. J Immunol. 2018 Jul 15;201(2):714-724.

Inhibitors · Natural Compounds · Compound Libraries

This product is for Research Use Only · Not for Human or Veterinary or Therapeutic Use.

Tel:781-999-4286

E-mail:info@targetmol.com

Address:36 Washington Street,Wellesley Hills,MA 02481