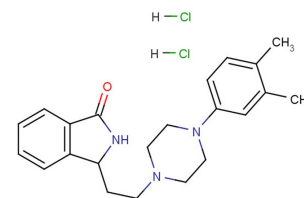


PD 168568 dihydrochloride

Chemical Properties

CAS No.:	1782532-06-2
Formula:	C ₂₂ H ₂₉ Cl ₂ N ₃ O
Molecular Weight:	422.39
Appearance:	N/A
Storage:	0-4°C for short term (days to weeks), or -20°C for long term (months).



Biological Description

Description	PD 168568 dihydrochloride is an orally active and selective antagonist of D4 dopamine receptor(Ki of 8.8 nM).
Targets(IC ₅₀)	D4 Receptor: 8.8 nM (ki)
In vitro	PD 168568 dihydrochloride has good selective for D4 receptor(Ki of 1842 nM for D2 receptor).
In vivo	PD 168568 dihydrochloride inhibit amphetamine stimulated locomotor activity in the rat.

Solubility Information

Solubility	< 1 mg/ml refers to the product slightly soluble or insoluble
------------	---

Preparing Stock Solutions

	1mg	5mg	10mg
1 mM	2.367 mL	11.837 mL	23.675 mL
5 mM	0.473 mL	2.367 mL	4.735 mL
10 mM	0.237 mL	1.184 mL	2.367 mL
50 mM	0.047 mL	0.237 mL	0.473 mL

Please select the appropriate solvent to prepare the stock solution, according to the solubility of the product in different solvents. The storage conditions and period of the stock solution: - 80 °C for 6 months; - 20 °C for 1 month. Please use it as soon as possible.

Reference

1. Belliotti TR, et al. Isoindolinone enantiomers having affinity for the dopamine D4 receptor. Bioorg Med Chem Lett. 1998 Jun 16;8(12):1499-502.

Inhibitors · Natural Compounds · Compound Libraries

This product is for Research Use Only · Not for Human or Veterinary or Therapeutic Use.

Tel:781-999-4286

E-mail:info@targetmol.com

Address:36 Washington Street,Wellesley Hills,MA 02481