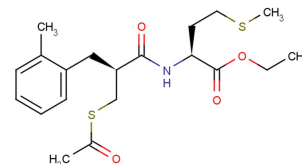


SCH 42495

Chemical Properties

CAS No.:	136511-43-8
Formula:	C ₂₀ H ₂₉ NO ₄ S ₂
Molecular Weight:	411.58
Appearance:	N/A
Storage:	0-4°C for short term (days to weeks), or -20°C for long term (months).

**Biological Description**

Description	SCH 42495 is an orally active neutral metalloendopeptidase inhibitor. SCH 42495 is the orally active ethyl ester prodrug of SCH 42354.
Targets(IC ₅₀)	NEP: None
In vitro	SCH 42354 inhibits the hydrolysis of leu-enkephalin and ANF (IC ₅₀ : 8.3 and 10.0 nM, respectively) [1].
In vivo	SCH 42495 (oral doses of 1, 3, or 10 mg/kg) produces significant reductions in blood pressure in DOCA-N a hypertensive rats of 22±6, 43±7, and 62±12 mm Hg, respectively. SCH 42495 (30 mg/kg; oral gavage; twice daily) leads to a significant reduction in pulmonary vascular remodeling and ventricular hypertrophy in hypoxic rats after 10 days. Treatment with SCH 42495 (30 mg/kg; oral gavage; twice daily) resulting in a decrease in cardiovascular remodeling secondary to chronic hypoxia in rats [1][2].

Solubility Information

Solubility	< 1 mg/ml refers to the product slightly soluble or insoluble
------------	---

Preparing Stock Solutions

	1mg	5mg	10mg
1 mM	2.43 mL	12.148 mL	24.297 mL
5 mM	0.486 mL	2.43 mL	4.859 mL
10 mM	0.243 mL	1.215 mL	2.43 mL
50 mM	0.049 mL	0.243 mL	0.486 mL

Please select the appropriate solvent to prepare the stock solution, according to the solubility of the product in different solvents. The storage conditions and period of the stock solution: - 80 °C for 6 months; - 20 °C for 1 month. Please use it as soon as possible.

Reference

1. Watkins RW, et al. Atrial natriuretic factor potentiating and hemodynamic effects of SCH 42495, a new, neutral metalloendopeptidase inhibitor. Am J Hypertens. 1993 May;6(5 Pt 1):357-68.
2. Thompson JS, et al. Effects of the neutral endopeptidase inhibitor, SCH 42495, on the cardiovascular remodelling secondary to chronic hypoxia in rats. Clin Sci (Lond). 1994 Jul;87(1):109-14.

Inhibitors · Natural Compounds · Compound Libraries

This product is for Research Use Only · Not for Human or Veterinary or Therapeutic Use.

Tel:781-999-4286

E-mail:info@targetmol.com

Address:36 Washington Street,Wellesley Hills,MA 02481