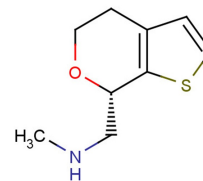


SEP-363856

## Chemical Properties

CAS No.:	1310426-33-5
Formula:	C <sub>9</sub> H <sub>13</sub> NOS
Molecular Weight:	183.27
Appearance:	N/A
Storage:	0-4°C for short term (days to weeks), or -20°C for long term (months).



## Biological Description

Description	SEP-363856 is an agent of orally active and CNS active psychotropic with a unique, non-D2/5-HT <sub>2A</sub> mechanism of action, exerts its antipsychotic-like effects, has the potential to treatment of schizophrenia.
Targets(IC <sub>50</sub> )	TAAR1: 0.140 μM (EC <sub>50</sub> ) 5-HT <sub>1A</sub> Receptor: 2.3 μM (EC <sub>50</sub> ) 5-HT <sub>1B</sub> Receptor: 15.6 μM (EC <sub>50</sub> ) 5-HT <sub>1D</sub> Receptor: 0.262 μM (EC <sub>50</sub> ) 5-HT <sub>2A</sub> Receptor: 10 μM (EC <sub>50</sub> ) 5-HT <sub>2C</sub> Receptor: 30 μM (EC <sub>50</sub> ) 5-HT <sub>7</sub> Receptor: 6.7 μM (EC <sub>50</sub> )
In vitro	SEP-856 (10 μM) specifically inhibits α <sub>2A</sub> , α <sub>2B</sub> , D <sub>2</sub> , 5-HT <sub>1A</sub> , 5-HT <sub>1B</sub> , 5-HT <sub>1D</sub> , 5-HT <sub>2A</sub> , 5-HT <sub>2B</sub> , 5-HT <sub>2C</sub> and 5-HT <sub>7</sub> > 50% receptor.
In vivo	SEP-856 (0.3, 1 and 10 mg/kg, i.p.) is CNS active. SEP-856 exhibits a behavioral signature similar to known antipsychotic drugs. PCP-induced hyperactivity significantly reduced by SEP-856 (0.3, 1 and 10 mg/kg, orally once). Oral SEP-856 administration (1, 3 and 10 mg/kg) produces a dose-dependent decrease in REM sleep, increase in latency to REM sleep and increase in cumulative wake (W) time.

## Solubility Information

Solubility	< 1 mg/ml refers to the product slightly soluble or insoluble
------------	---

### Preparing Stock Solutions

	1mg	5mg	10mg
1 mM	5.456 mL	27.282 mL	54.564 mL
5 mM	1.091 mL	5.456 mL	10.913 mL
10 mM	0.546 mL	2.728 mL	5.456 mL
50 mM	0.109 mL	0.546 mL	1.091 mL

Please select the appropriate solvent to prepare the stock solution, according to the solubility of the product in different solvents. The storage conditions and period of the stock solution: - 80 °C for 6 months; - 20 °C for 1 month. Please use it as soon as possible.

Reference

1. Dedic N, et al. SEP-363856, a Novel Psychotropic Agent with a Unique, Non-D2 Receptor Mechanism of Action. J Pharmacol Exp Ther. 2019 Oct;371(1):1-14.

[Inhibitors](#) · [Natural Compounds](#) · [Compound Libraries](#)

This product is for Research Use Only · Not for Human or Veterinary or Therapeutic Use.

Tel:781-999-4286

E-mail:[info@targetmol.com](mailto:info@targetmol.com)

Address:36 Washington Street,Wellesley Hills,MA 02481