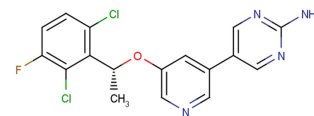


## SHIP2-IN-1

## Chemical Properties

CAS No.:	2252247-80-4
Formula:	C <sub>17</sub> H <sub>13</sub> Cl <sub>2</sub> FN <sub>4</sub> O
Molecular Weight:	379.22
Appearance:	N/A
Storage:	0-4°C for short term (days to weeks), or -20°C for long term (months).



## Biological Description

Description	SHIP2-IN-1 is a potent SHIP2 inhibitor (IC <sub>50</sub> : 2 µM), and used in the research of Alzheimer's disease.
Targets (IC <sub>50</sub> )	SHIP2: 2 µM
In vitro	PI(3,4)P <sub>2</sub> production in HT22 cells significantly inhibited by SHIP2-IN-1 (10 µM).

## Solubility Information

Solubility	< 1 mg/ml refers to the product slightly soluble or insoluble
------------	---

## Preparing Stock Solutions

	1mg	5mg	10mg
1 mM	2.637 mL	13.185 mL	26.37 mL
5 mM	0.527 mL	2.637 mL	5.274 mL
10 mM	0.264 mL	1.318 mL	2.637 mL
50 mM	0.053 mL	0.264 mL	0.527 mL

Please select the appropriate solvent to prepare the stock solution, according to the solubility of the product in different solvents. The storage conditions and period of the stock solution: - 80 °C for 6 months; - 20 °C for 1 month. Please use it as soon as possible.

## Reference

1. Lim JW, et al. Identification of crizotinib derivatives as potent SHIP2 inhibitors for the treatment of Alzheimer's disease. Eur J Med Chem. 2018 Sep 5;157:405-422.

Inhibitors · Natural Compounds · Compound Libraries

This product is for Research Use Only · Not for Human or Veterinary or Therapeutic Use.

Tel:781-999-4286

E-mail:[info@targetmol.com](mailto:info@targetmol.com)

Address:36 Washington Street,Wellesley Hills,MA 02481