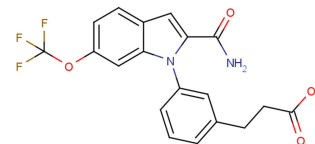


sPLA2-X Inhibitor 31

Chemical Properties

CAS No.:	2241025-50-1
Formula:	C ₁₉ H ₁₅ F ₃ N ₂ O ₄
Molecular Weight:	392.33
Appearance:	N/A
Storage:	0-4°C for short term (days to weeks), or -20°C for long term (months).



Biological Description

Description	sPLA2-X Inhibitor 31 is a selective inhibitor of secreted phospholipase A2 type X (sPLA2-X) (IC ₅₀ s of 26 nM, 310 nM, and 2230 nM for sPLA2-X, sPLA2-IIa, and sPLA2-V, respectively).
Targets(IC ₅₀)	sPLA2 -X: 26 nM sPLA2-IIa: 310nM sPLA2-V: 2230 nM

Solubility Information

Solubility	< 1 mg/ml refers to the product slightly soluble or insoluble
------------	---

Preparing Stock Solutions

	1mg	5mg	10mg
1 mM	2.549 mL	12.744 mL	25.489 mL
5 mM	0.51 mL	2.549 mL	5.098 mL
10 mM	0.255 mL	1.274 mL	2.549 mL
50 mM	0.051 mL	0.255 mL	0.51 mL

Please select the appropriate solvent to prepare the stock solution, according to the solubility of the product in different solvents. The storage conditions and period of the stock solution: - 80 °C for 6 months; - 20 °C for 1 month. Please use it as soon as possible.

Reference

1. Knerr L, et al. Discovery of a Series of Indole-2 Carboxamides as Selective Secreted Phospholipase A2 Type X(sPLA2-X) Inhibitors. ACS Med Chem Lett. 2018 Jun 23;9(7):594-599.

Inhibitors · Natural Compounds · Compound Libraries

This product is for Research Use Only · Not for Human or Veterinary or Therapeutic Use.

Tel:781-999-4286

E-mail:info@targetmol.com

Address:36 Washington Street,Wellesley Hills,MA 02481