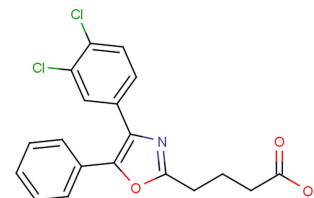


SWE101

Chemical Properties

CAS No.: 2376322-12-0
Formula: C₁₉H₁₅Cl₂NO₃
Molecular Weight: 376.23
Appearance: N/A
Storage: 0-4°C for short term (days to weeks), or -20°C for long term (months).

**Biological Description**

Description	SWE101 is a potent human and rat soluble epoxide hydrolase (sEH)-P inhibitor (IC ₅₀ s of 4 μM and 2.8 μM, respectively).
Targets(IC ₅₀)	sEH-P of human: 4 μM sEH-P of rat: 2.8 μM

Solubility Information

Solubility	< 1 mg/ml refers to the product slightly soluble or insoluble
------------	---

Preparing Stock Solutions

	1mg	5mg	10mg
1 mM	2.658 mL	13.29 mL	26.579 mL
5 mM	0.532 mL	2.658 mL	5.316 mL
10 mM	0.266 mL	1.329 mL	2.658 mL
50 mM	0.053 mL	0.266 mL	0.532 mL

Please select the appropriate solvent to prepare the stock solution, according to the solubility of the product in different solvents. The storage conditions and period of the stock solution: - 80 °C for 6 months; - 20 °C for 1 month. Please use it as soon as possible.

Reference

1. Kramer JS, et al. Discovery of first in vivo active inhibitors of soluble epoxide hydrolase (sEH) phosphatase domain. J Med Chem. 2019 Aug 22.

Inhibitors · Natural Compounds · Compound Libraries

This product is for Research Use Only · Not for Human or Veterinary or Therapeutic Use.

Tel:781-999-4286

E-mail:info@targetmol.com

Address:36 Washington Street,Wellesley Hills,MA 02481