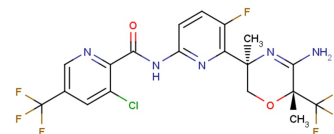


Umibecestat

Chemical Properties

| | |
|-------------------|--|
| CAS No.: | 1387560-01-1 |
| Formula: | C ₁₉ H ₁₅ ClF ₇ N ₅ O ₂ |
| Molecular Weight: | 513.8 |
| Appearance: | N/A |
| Storage: | 0-4°C for short term (days to weeks), or -20°C for long term (months). |



Biological Description

| | |
|----------------------------|--|
| Description | Umibecestat is an inhibitor of beta-site amyloid precursor protein cleaving enzyme-1 (BACE-1) (IC ₅₀ s: 11 nM and 10 nM for human BACE-1 and mouse BACE-1). |
| Targets(IC ₅₀) | human BACE-1: 11 nM mouse BACE-1: 10 nM |
| In vitro | Umibecestat is a potent inhibitor of BACE-1 that is selective for BACE-1 over other human pepsin-like aspartic proteases, including BACE-2 and cathepsin D. |
| In vivo | In both rat brain and CSF, Umibecestat (CNP520) (1.5-51.3 mg/kg; given by oral gavage; 72 hours) shows dose-dependent effects on Aβ ₄₀ and a long duration of action. Umibecestat (3.1 mg/kg; p.o.; 7 days) shows a > 75% reduction on Aβ ₄₀ and Aβ ₄₂ in CSF after dosing and returns slowly to baseline over the next 7 days. |

Solubility Information

| | |
|------------|---|
| Solubility | < 1 mg/ml refers to the product slightly soluble or insoluble |
|------------|---|

Preparing Stock Solutions

| | 1mg | 5mg | 10mg |
|-------|----------|----------|-----------|
| 1 mM | 1.946 mL | 9.731 mL | 19.463 mL |
| 5 mM | 0.389 mL | 1.946 mL | 3.893 mL |
| 10 mM | 0.195 mL | 0.973 mL | 1.946 mL |
| 50 mM | 0.039 mL | 0.195 mL | 0.389 mL |

Please select the appropriate solvent to prepare the stock solution, according to the solubility of the product in different solvents. The storage conditions and period of the stock solution: - 80 °C for 6 months; - 20 °C for 1 month. Please use it as soon as possible.

Reference

1. Neumann U, et al. The BACE-1 inhibitor CNP520 for prevention trials in Alzheimer's disease. EMBO Mol Med. 2018 Nov;10(11). pii: e9316.

Inhibitors · Natural Compounds · Compound Libraries

This product is for Research Use Only · Not for Human or Veterinary or Therapeutic Use.

Tel:781-999-4286

E-mail:info@targetmol.com

Address:36 Washington Street,Wellesley Hills,MA 02481