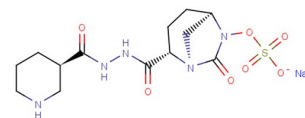


Zidebactam sodium salt

Chemical Properties

CAS No.:	1706777-46-9
Formula:	C ₁₃ H ₂₀ N ₅ NaO ₇ S
Molecular Weight:	413.38
Appearance:	N/A
Storage:	0-4°C for short term (days to weeks), or -20°C for long term (months).



Biological Description

Description	Zidebactam sodium salt is a potent inhibitor of β -lactamase, and also is an inhibitor of penicillin-binding protein2 (PBP2)(IC ₅₀ of 0.26 μ g/mL).
Targets(IC ₅₀)	<i>P. aeruginosa</i> PAO1 PBP2: 0.26 \pm 0.06 μ g/mL
In vitro	Zidebactam sodium salt inhibits WT Enterobacteriaceae with MIC ₅₀ of 0.25 mg/L[1].Zidebactam sodium salt alone exhibits variable activity when tested against <i>E. coli</i> (MIC _{50/90} 0.12/0.12 mg/L) and <i>Enterobacter</i> spp with MIC _{50/90} of 0.12/0.25 mg/L[1].

Solubility Information

Solubility	< 1 mg/ml refers to the product slightly soluble or insoluble
------------	---------------------------------------------------------------

Preparing Stock Solutions

	1mg	5mg	10mg
1 mM	2.419 mL	12.095 mL	24.191 mL
5 mM	0.484 mL	2.419 mL	4.838 mL
10 mM	0.242 mL	1.21 mL	2.419 mL
50 mM	0.048 mL	0.242 mL	0.484 mL

Please select the appropriate solvent to prepare the stock solution, according to the solubility of the product in different solvents. The storage conditions and period of the stock solution: - 80 °C for 6 months; - 20 °C for 1 month. Please use it as soon as possible.

Reference

1. Sader HS, et al. WCK 5222 (cefepime/zidebactam) antimicrobial activity tested against Gram-negative organisms producing clinically relevant β -lactamases. J Antimicrob Chemother. 2017 Jun 1;72(6):1696-1703.
2. Moya B, et al. WCK 5107 (Zidebactam) and WCK 5153 Are Novel Inhibitors of PBP2 Showing Potent " β -Lactam Enhancer" Activity against *Pseudomonas aeruginosa*, Including Multidrug-Resistant Metallo- β -Lactamase-Producing High-Risk Clones. Antimicrob Agents Chemother. 2017 May 24;61(6).

Inhibitors · Natural Compounds · Compound Libraries

This product is for Research Use Only · Not for Human or Veterinary or Therapeutic Use.

Tel:781-999-4286

E-mail:info@targetmol.com

Address:36 Washington Street,Wellesley Hills,MA 02481