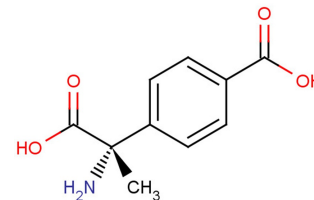


(S)-MCPG

Chemical Properties

CAS No.:	150145-89-4
Formula:	C ₁₀ H ₁₁ NO ₄
Molecular Weight:	209.2
Appearance:	N/A
Storage:	0-4°C for short term (days to weeks), or -20°C for long term (months).



Biological Description

Description	(S)-MCPG is the active isomer of (RS)-MCPG, non-selective group I/group II metabotropic glutamate receptor antagonist.
Targets(IC ₅₀)	Others: None

Solubility Information

Solubility	DMSO: 6.2 mg/mL (29.64 mM) (< 1 mg/ml refers to the product slightly soluble or insoluble)
------------	--

Preparing Stock Solutions

	1mg	5mg	10mg
1 mM	4.78 mL	23.901 mL	47.801 mL
5 mM	0.956 mL	4.78 mL	9.56 mL
10 mM	0.478 mL	2.39 mL	4.78 mL
50 mM	0.096 mL	0.478 mL	0.956 mL

Please select the appropriate solvent to prepare the stock solution, according to the solubility of the product in different solvents. The storage conditions and period of the stock solution: - 80 °C for 6 months; - 20 °C for 1 month. Please use it as soon as possible.

Reference

1. Bordi F et al. Effects of the metabotropic glutamate receptor antagonist MCPG on spatial and context-specific learning. *Neuropharmacology*. 1996;35(11):1557-65.
2. Sekiyama N et al. Structure-activity relationships of new agonists and antagonists of different metabotropic glutamate receptor subtypes. *Br J Pharmacol*. 1996 Apr;117(7):1493-503.
3. Jane DE et al. Stereospecific antagonism by (+)-alpha-methyl-4-carboxyphenylglycine (MCPG) of (1S,3R)-ACPD-induced effects in neonatal rat motoneurons and rat thalamic neurons. *Neuropharmacology*. 1993 Jul;32(7):725-7.

Inhibitors · Natural Compounds · Compound Libraries

This product is for Research Use Only · Not for Human or Veterinary or Therapeutic Use.

Tel:781-999-4286

E-mail:info@targetmol.com

Address:36 Washington Street,Wellesley Hills,MA 02481