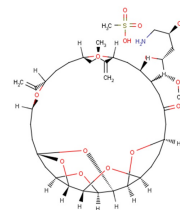


## Eribulin mesylate

## Chemical Properties

CAS No.:	441045-17-6
Formula:	C <sub>41</sub> H <sub>63</sub> NO <sub>14</sub> S
Molecular Weight:	826
Appearance:	N/A
Storage:	0-4°C for short term (days to weeks), or -20°C for long term (months).



## Biological Description

Description	Eribulin mesylate (E7389 mesylate) inhibits the proliferation of cancer cells by binding microtubule proteins and microtubules. Eribulin mesylate (E7389 mesylate) is a microtubule targeting agent that is used in the treatment of metastatic breast cancer.
Targets(IC <sub>50</sub> )	Others: None

## Solubility Information

Solubility	DMSO: 100 mg/mL (121.07 mM) Ethanol: 100 mg/mL (121.07 mM) ( < 1 mg/ml refers to the product slightly soluble or insoluble)
------------	---

## Preparing Stock Solutions

	1mg	5mg	10mg
1 mM	1.211 mL	6.053 mL	12.107 mL
5 mM	0.242 mL	1.211 mL	2.421 mL
10 mM	0.121 mL	0.605 mL	1.211 mL
50 mM	0.024 mL	0.121 mL	0.242 mL

Please select the appropriate solvent to prepare the stock solution, according to the solubility of the product in different solvents. The storage conditions and period of the stock solution: - 80 °C for 6 months; - 20 °C for 1 month. Please use it as soon as possible.

## Reference

- Okouneva, T., et al., Inhibition of centromere dynamics by eribulin (E7389) during mitotic metaphase. *Mol Cancer Ther*, 2008. 7(7): p. 2003-11.
- Smith, J.A., et al., Eribulin binds at microtubule ends to a single site on tubulin to suppress dynamic instability. *Biochemistry*, 2010. 49(6): p. 1331-7.
- Towle, M.J., et al., Eribulin induces irreversible mitotic blockade: implications of cell-based pharmacodynamics for in vivo efficacy under intermittent dosing conditions. *Cancer Res*, 2011. 71(2): p. 496-505.

Inhibitors · Natural Compounds · Compound Libraries

This product is for Research Use Only · Not for Human or Veterinary or Therapeutic Use.

Tel:781-999-4286

E-mail:[info@targetmol.com](mailto:info@targetmol.com)

Address:36 Washington Street,Wellesley Hills,MA 02481