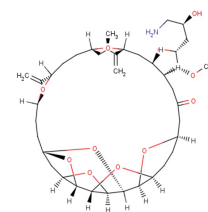


Eribulin

Chemical Properties

CAS No.:	253128-41-5
Formula:	C ₄₀ H ₅₉ NO ₁₁
Molecular Weight:	729.9
Appearance:	N/A
Storage:	0-4°C for short term (days to weeks), or -20°C for long term (months).



Biological Description

Description	Eribulin inhibits the proliferation of cancer cells by binding microtubule proteins and microtubules. Eribulin is a microtubule targeting agent that is used in the treatment of metastatic breast cancer.
Targets(IC ₅₀)	Others: None

Solubility Information

Solubility	< 1 mg/ml refers to the product slightly soluble or insoluble
------------	---

Preparing Stock Solutions

	1mg	5mg	10mg
1 mM	1.37 mL	6.85 mL	13.701 mL
5 mM	0.274 mL	1.37 mL	2.74 mL
10 mM	0.137 mL	0.685 mL	1.37 mL
50 mM	0.027 mL	0.137 mL	0.274 mL

Please select the appropriate solvent to prepare the stock solution, according to the solubility of the product in different solvents. The storage conditions and period of the stock solution: - 80 °C for 6 months; - 20 °C for 1 month. Please use it as soon as possible.

Reference

- Okouneva, T., et al., Inhibition of centromere dynamics by eribulin (E7389) during mitotic metaphase. *Mol Cancer Ther*, 2008. 7(7): p. 2003-11.
- Smith, J.A., et al., Eribulin binds at microtubule ends to a single site on tubulin to suppress dynamic instability. *Biochemistry*, 2010. 49(6): p. 1331-7.
- Towle, M.J., et al., Eribulin induces irreversible mitotic blockade: implications of cell-based pharmacodynamics for in vivo efficacy under intermittent dosing conditions. *Cancer Res*, 2011. 71(2): p. 496-505.

Inhibitors · Natural Compounds · Compound Libraries

This product is for Research Use Only · Not for Human or Veterinary or Therapeutic Use.

Tel:781-999-4286

E-mail:info@targetmol.com

Address:36 Washington Street,Wellesley Hills,MA 02481