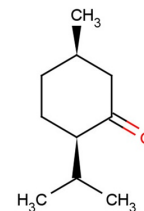


(+)-Isomenthone**Chemical Properties**

CAS No.:	1196-31-2
Formula:	C ₁₀ H ₁₈ O
Molecular Weight:	154.25
Appearance:	N/A
Storage:	0-4°C for short term (days to weeks), or -20°C for long term (months).

**Biological Description**

Description	(+)-Isomenthone is an isomer of L-Menthone. (+)-Isomenthone is an isomenthone isolated from <i>Ziziphora clinopodioides</i> Lam.
Targets(IC ₅₀)	Others: None

Solubility Information

Solubility	< 1 mg/ml refers to the product slightly soluble or insoluble
------------	---

Preparing Stock Solutions

	1mg	5mg	10mg
1 mM	6.483 mL	32.415 mL	64.83 mL
5 mM	1.297 mL	6.483 mL	12.966 mL
10 mM	0.648 mL	3.241 mL	6.483 mL
50 mM	0.13 mL	0.648 mL	1.297 mL

Please select the appropriate solvent to prepare the stock solution, according to the solubility of the product in different solvents. The storage conditions and period of the stock solution: - 80 °C for 6 months; - 20 °C for 1 month. Please use it as soon as possible.

Reference

1. Zhang QH, et al. Essential oils and their compositions as spatial repellents for pestiferous social wasps. *Pest Manag Sci.* 2013 Apr;69(4):542-52.
2. XING Si-lei, et al. Essential Oil Compositions and Antioxidant Activities of Two *Ziziphora* Species in Xinjiang. *FOOD SCIENCE.* 2010, Vol. 31 Issue (7): 154-159.

Inhibitors · Natural Compounds · Compound Libraries

This product is for Research Use Only · Not for Human or Veterinary or Therapeutic Use.

Tel:781-999-4286

E-mail:info@targetmol.com

Address:36 Washington Street,Wellesley Hills,MA 02481