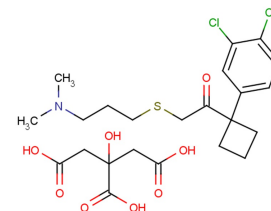


SPD-473 citrate

Chemical Properties

CAS No.:	161190-26-7
Formula:	C ₂₃ H ₃₁ Cl ₂ NO ₈ S
Molecular Weight:	552.47
Appearance:	N/A
Storage:	0-4°C for short term (days to weeks), or -20°C for long term (months).



Biological Description

Description	SPD-473 citrate is an inhibitor of serotonin/dopamine/norepinephrine reuptake.
Targets(IC ₅₀)	dopamine: None
In vitro	SPD-473 inhibits the synaptic reuptake of dopamine, serotonin and noradrenaline, This makes it a potential triple reuptake inhibitor and can be used to treat Parkinson's disease.

Solubility Information

Solubility	< 1 mg/ml refers to the product slightly soluble or insoluble
------------	---

Preparing Stock Solutions

	1mg	5mg	10mg
1 mM	1.81 mL	9.05 mL	18.101 mL
5 mM	0.362 mL	1.81 mL	3.62 mL
10 mM	0.181 mL	0.905 mL	1.81 mL
50 mM	0.036 mL	0.181 mL	0.362 mL

Please select the appropriate solvent to prepare the stock solution, according to the solubility of the product in different solvents. The storage conditions and period of the stock solution: - 80 °C for 6 months; - 20 °C for 1 month. Please use it as soon as possible.

Inhibitors · Natural Compounds · Compound Libraries

This product is for Research Use Only · Not for Human or Veterinary or Therapeutic Use.

Tel:781-999-4286

E-mail:info@targetmol.com

Address:36 Washington Street,Wellesley Hills,MA 02481