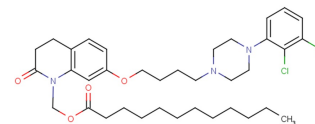


Aripiprazole Lauroxil

Chemical Properties

CAS No.:	1259305-29-7
Formula:	C ₃₆ H ₅₁ Cl ₂ N ₃ O ₄
Molecular Weight:	660.71
Appearance:	N/A
Storage:	0-4°C for short term (days to weeks), or -20°C for long term (months).



Biological Description

Description	Aripiprazole lauroxil is cleaved by body's enzyme esterase to N-hydroxymethyl aripiprazole (plus lauric acid) and then to aripiprazole (plus formaldehyde), no toxicity[1]. Aripiprazole lauroxil, an N-acyloxymethyl prodrug of aripiprazole, is a Long-acting injectable (LAI) typical antipsychotic for schizophrenia.
Targets(IC ₅₀)	Others: None
In vivo	Aripiprazole lauroxil (intravenous administration; 1.87 mg/ml) bioconversion in vivo involves the formation of an intermediate, N-hydroxymethyl aripiprazole. The in vitro data indicates a high bioconversion of aripiprazole lauroxil, thus, the concentration of N-hydroxymethyl aripiprazole observed in the animals dosed with aripiprazole lauroxil is surprisingly high[1].

Solubility Information

Solubility	< 1 mg/ml refers to the product slightly soluble or insoluble
------------	---

Preparing Stock Solutions

	1mg	5mg	10mg
1 mM	1.514 mL	7.568 mL	15.135 mL
5 mM	0.303 mL	1.514 mL	3.027 mL
10 mM	0.151 mL	0.757 mL	1.514 mL
50 mM	0.03 mL	0.151 mL	0.303 mL

Please select the appropriate solvent to prepare the stock solution, according to the solubility of the product in different solvents. The storage conditions and period of the stock solution: - 80 °C for 6 months; - 20 °C for 1 month. Please use it as soon as possible.

Reference

1. Jann MW, et al. Long-Acting Injectable Second-Generation Antipsychotics: An Update and Comparison Between Agents.CNS Drugs. 2018 Mar;32(3):241-257.
2. Rohde M, et al. Biological conversion of aripiprazole lauroxil - An N-acyloxymethyl aripiprazole prodrug.Results Pharma Sci. 2014 May 2;4:19-25.

Inhibitors · Natural Compounds · Compound Libraries

This product is for Research Use Only · Not for Human or Veterinary or Therapeutic Use.

Tel:781-999-4286

E-mail:info@targetmol.com

Address:36 Washington Street,Wellesley Hills,MA 02481