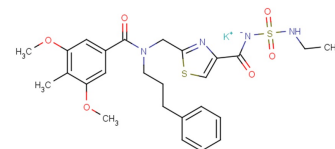


ASP6432

Chemical Properties

CAS No.: 1282549-08-9
Formula: C₂₆H₃₁KN₄O₆S₂
Molecular Weight: 598.78
Appearance: N/A
Storage: 0-4°C for short term (days to weeks), or -20°C for long term (months).



Biological Description

Description	ASP6432 is an antagonist of type 1 lysophosphatidic acid receptor (LPA1). For human LPA1 and rat LPA1, the IC ₅₀ s are 11 nM and 30 nM , respectively.
Targets(IC ₅₀)	human LPA1: 11 nM rat LPA1: 30 nM
In vitro	ASP6432 inhibits proliferation of human prostate stromal cells induced by LPA.

Solubility Information

Solubility	< 1 mg/ml refers to the product slightly soluble or insoluble
------------	---

Preparing Stock Solutions

	1mg	5mg	10mg
1 mM	1.67 mL	8.35 mL	16.701 mL
5 mM	0.334 mL	1.67 mL	3.34 mL
10 mM	0.167 mL	0.835 mL	1.67 mL
50 mM	0.033 mL	0.167 mL	0.334 mL

Please select the appropriate solvent to prepare the stock solution, according to the solubility of the product in different solvents. The storage conditions and period of the stock solution: - 80 °C for 6 months; - 20 °C for 1 month. Please use it as soon as possible.

Reference

1. Sakamoto K, et al. Effect of ASP6432, a Novel Type 1 Lysophosphatidic Acid Receptor Antagonist, on Urethral Function and Prostate Cell Proliferation. J Pharmacol Exp Ther. 2018 Aug;366(2):390-396.

Inhibitors · Natural Compounds · Compound Libraries

This product is for Research Use Only · Not for Human or Veterinary or Therapeutic Use.

Tel:781-999-4286

E-mail:info@targetmol.com

Address:36 Washington Street,Wellesley Hills,MA 02481