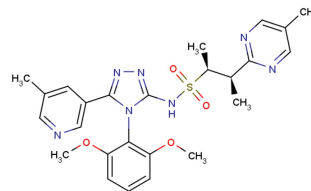


## Azelaprag

## Chemical Properties

CAS No.:	2049980-18-7
Formula:	C <sub>25</sub> H <sub>29</sub> N <sub>7</sub> O <sub>4</sub> S
Molecular Weight:	523.61
Appearance:	N/A
Storage:	0-4°C for short term (days to weeks), or -20°C for long term (months).



## Biological Description

Description	Azelaprag (Example 263.0) is a drug candidate as an apelin receptor agonist
Targets(IC <sub>50</sub> )	Apelin receptor: None

## Solubility Information

Solubility	< 1 mg/ml refers to the product slightly soluble or insoluble
------------	---

## Preparing Stock Solutions

	1mg	5mg	10mg
1 mM	1.91 mL	9.549 mL	19.098 mL
5 mM	0.382 mL	1.91 mL	3.82 mL
10 mM	0.191 mL	0.955 mL	1.91 mL
50 mM	0.038 mL	0.191 mL	0.382 mL

Please select the appropriate solvent to prepare the stock solution, according to the solubility of the product in different solvents. The storage conditions and period of the stock solution: - 80 °C for 6 months; - 20 °C for 1 month. Please use it as soon as possible.

## Reference

1. WO2016187308A1.

Inhibitors · Natural Compounds · Compound Libraries

This product is for Research Use Only · Not for Human or Veterinary or Therapeutic Use.

Tel:781-999-4286

E-mail:[info@targetmol.com](mailto:info@targetmol.com)

Address:36 Washington Street,Wellesley Hills,MA 02481