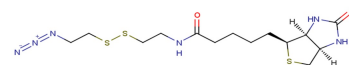


Azide-C2-SS-C2-biotin

Chemical Properties

CAS No.:	1620523-64-9
Formula:	C ₁₄ H ₂₄ N ₆ O ₂ S ₃
Molecular Weight:	404.57
Appearance:	N/A
Storage:	0-4°C for short term (days to weeks), or -20°C for long term (months).



Biological Description

Description	Azide-C2-SS-C2-biotin is a cleavable ADC linker used in the synthesis of antibody-drug conjugates (ADCs)[1].
Targets(IC ₅₀)	Cleavable: None
In vitro	ADCs are comprised of an antibody to which is attached an ADC cytotoxin through an ADC linker[1].

Solubility Information

Solubility	< 1 mg/ml refers to the product slightly soluble or insoluble
------------	---

Preparing Stock Solutions

	1mg	5mg	10mg
1 mM	2.472 mL	12.359 mL	24.718 mL
5 mM	0.494 mL	2.472 mL	4.944 mL
10 mM	0.247 mL	1.236 mL	2.472 mL
50 mM	0.049 mL	0.247 mL	0.494 mL

Please select the appropriate solvent to prepare the stock solution, according to the solubility of the product in different solvents. The storage conditions and period of the stock solution: - 80 °C for 6 months; - 20 °C for 1 month. Please use it as soon as possible.

Reference

1. Beck A, et al. Strategies and challenges for the next generation of antibody-drug conjugates. Nat Rev Drug Discov. 2017 May;16(5):315-337.

Inhibitors · Natural Compounds · Compound Libraries

This product is for Research Use Only · Not for Human or Veterinary or Therapeutic Use.

Tel:781-999-4286

E-mail:info@targetmol.com

Address:36 Washington Street,Wellesley Hills,MA 02481