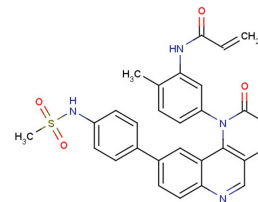


## BMX-IN-1

## Chemical Properties

CAS No.:	1431525-23-3
Formula:	C <sub>29</sub> H <sub>24</sub> N <sub>4</sub> O <sub>4</sub> S
Molecular Weight:	524.59
Appearance:	N/A
Storage:	0-4°C for short term (days to weeks), or -20°C for long term (months).



## Biological Description

Description	BMX-IN-1 is a selective and irreversible bone marrow tyrosine kinase on chromosome X (BMX) inhibitor that targets Cys496 in the BMX ATP binding domain with an IC <sub>50</sub> of 8 nM.
Targets(IC <sub>50</sub> )	BMX: 8 nM BTK: 10.4 nM
In vitro	BMX-IN-1 inhibits only wild-type BMX with an IC <sub>50</sub> of 138 nM and it also inhibits the proliferation of Tel-BMX-transformed Ba/F3 cells and RV-1 cells with IC <sub>50</sub> s of 25 nM and 2.53 μM. BMX-IN-1 exhibits remarkable selectivity with an S(10) score of 0.01. BMX-IN-1 requires covalent modification of Cys496 of BMX to achieve potent inhibition[1].

## Solubility Information

Solubility	DMSO: 100 mg/mL (190.63 mM) DMF: 10 mg/mL (19.06 mM) ( < 1 mg/ml refers to the product slightly soluble or insoluble)
------------	---

## Preparing Stock Solutions

	1mg	5mg	10mg
1 mM	1.906 mL	9.531 mL	19.063 mL
5 mM	0.381 mL	1.906 mL	3.813 mL
10 mM	0.191 mL	0.953 mL	1.906 mL
50 mM	0.038 mL	0.191 mL	0.381 mL

Please select the appropriate solvent to prepare the stock solution, according to the solubility of the product in different solvents. The storage conditions and period of the stock solution: - 80 °C for 6 months; - 20 °C for 1 month. Please use it as soon as possible.

## Reference

1. Feiyang Liu , et al. Discovery of a Selective Irreversible BMX Inhibitor for Prostate Cancer. ACS Chem. Biol., DOI: 10.1021/cb4000629

Inhibitors · Natural Compounds · Compound Libraries

This product is for Research Use Only · Not for Human or Veterinary or Therapeutic Use.

Tel:781-999-4286

E-mail:[info@targetmol.com](mailto:info@targetmol.com)

Address:36 Washington Street,Wellesley Hills,MA 02481