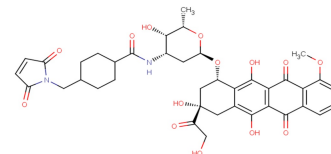


Doxorubicin-SMCC

Chemical Properties

| | |
|-------------------|--|
| CAS No.: | 400647-59-8 |
| Formula: | C ₃₉ H ₄₂ N ₂ O ₁₄ |
| Molecular Weight: | 762.76 |
| Appearance: | N/A |
| Storage: | 0-4°C for short term (days to weeks), or -20°C for long term (months). |



Biological Description

| | |
|----------------------------|---|
| Description | Doxorubicin-SMCC is a non-cleavable ADC linker used in the synthesis of antibody-drug conjugates (ADCs)[1]. |
| Targets(IC ₅₀) | Non-cleavable: None |
| In vitro | ADCs are comprised of an antibody to which is attached an ADC cytotoxin through an ADC linker[1]. |

Solubility Information

| | |
|------------|---|
| Solubility | < 1 mg/ml refers to the product slightly soluble or insoluble |
|------------|---|

Preparing Stock Solutions

| | 1mg | 5mg | 10mg |
|-------|----------|----------|----------|
| 1 mM | 1.311 mL | 6.555 mL | 13.11 mL |
| 5 mM | 0.262 mL | 1.311 mL | 2.622 mL |
| 10 mM | 0.131 mL | 0.656 mL | 1.311 mL |
| 50 mM | 0.026 mL | 0.131 mL | 0.262 mL |

Please select the appropriate solvent to prepare the stock solution, according to the solubility of the product in different solvents. The storage conditions and period of the stock solution: - 80 °C for 6 months; - 20 °C for 1 month. Please use it as soon as possible.

Reference

1. Beck A, et al. Strategies and challenges for the next generation of antibody-drug conjugates. Nat Rev Drug Discov. 2017 May;16(5):315-337.

Inhibitors · Natural Compounds · Compound Libraries

This product is for Research Use Only · Not for Human or Veterinary or Therapeutic Use.

Tel:781-999-4286

E-mail:info@targetmol.com

Address:36 Washington Street,Wellesley Hills,MA 02481