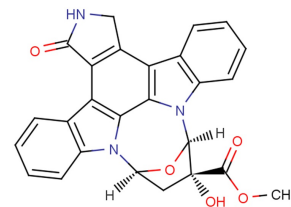


K-252a

Chemical Properties

CAS No.:	99533-80-9
Formula:	C ₂₇ H ₂₁ N ₃ O ₅
Molecular Weight:	467.47
Appearance:	N/A
Storage:	0-4°C for short term (days to weeks), or -20°C for long term (months).



Biological Description

Description	K-252a is a staurosporine analog isolated from <i>Nocardopsis</i> sp. soil fungi. K-252a inhibits protein kinase (IC ₅₀ : 470 nM, 140 nM, 270 nM, and 1.7 nM for PKC, PKA, Ca ²⁺ /calmodulin-dependent kinase type II, and phosphorylase kinase, respectively).
Targets(IC ₅₀)	PKC: 470 nM PKA: 140 nM Ca ²⁺ /calmodulin-dependent kinase type II: 270 nM phosphorylase kinase: 1.7 nM
In vitro	K-252a is an effective inhibitor (IC ₅₀ : 3 nM) of the tyrosine-protein kinase (TRK) activity of the NGF receptor gp140trk, the product of the trk proto-oncogene [3].

Solubility Information

Solubility	DMSO: 15 mg/mL (32.09 mM) (< 1 mg/ml refers to the product slightly soluble or insoluble)
------------	---

Preparing Stock Solutions

	1mg	5mg	10mg
1 mM	2.139 mL	10.696 mL	21.392 mL
5 mM	0.428 mL	2.139 mL	4.278 mL
10 mM	0.214 mL	1.07 mL	2.139 mL
50 mM	0.043 mL	0.214 mL	0.428 mL

Please select the appropriate solvent to prepare the stock solution, according to the solubility of the product in different solvents. The storage conditions and period of the stock solution: - 80 °C for 6 months; - 20 °C for 1 month. Please use it as soon as possible.

Reference

- Yasuzawa, T., et al. The structures of the novel protein kinase C inhibitors K-252a, b, c AND d Journal of Antibiotics 39(8), 1072-1078 (1986).
- Davis, P.D., et al. Inhibitors of protein kinase C. 1.1 2,3-bisarylmalesimides Journal of Medicinal Chemistry 35, 177-184 (1992).
- Tapley P, et al. K252a is a selective inhibitor of the tyrosine protein kinase activity of the trk family of oncogenes and neurotrophin receptors. Oncogene. 1992 Feb;7(2):371-81.

Inhibitors · Natural Compounds · Compound Libraries

This product is for Research Use Only · Not for Human or Veterinary or Therapeutic Use.

Tel:781-999-4286

E-mail:info@targetmol.com

Address:36 Washington Street,Wellesley Hills,MA 02481