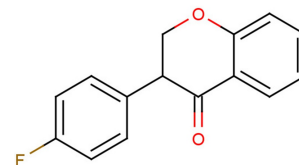


KBU2046

## Chemical Properties

CAS No.:	1143863-69-7
Formula:	C <sub>15</sub> H <sub>11</sub> FO <sub>2</sub>
Molecular Weight:	242.25
Appearance:	N/A
Storage:	0-4°C for short term (days to weeks), or -20°C for long term (months).



## Biological Description

Description	KBU2046 is an oral inhibitor of cell motility and cell invasion in vitro. It inhibits cancer metastasis and prolongs life. KBU2046 binds chaperone heterocomplexes, selectively alters binding of client proteins that regulate motility, and lacks all of the hallmarks of classical HSP90 inhibitors.
Targets(IC <sub>50</sub> )	Others: None

## Solubility Information

Solubility	< 1 mg/ml refers to the product slightly soluble or insoluble
------------	---

### Preparing Stock Solutions

	1mg	5mg	10mg
1 mM	4.128 mL	20.64 mL	41.28 mL
5 mM	0.826 mL	4.128 mL	8.256 mL
10 mM	0.413 mL	2.064 mL	4.128 mL
50 mM	0.083 mL	0.413 mL	0.826 mL

Please select the appropriate solvent to prepare the stock solution, according to the solubility of the product in different solvents. The storage conditions and period of the stock solution: - 80 °C for 6 months; - 20 °C for 1 month. Please use it as soon as possible.

### Reference

1. Xu L, et al. Precision therapeutic targeting of human cancer cell motility. Nat Commun. 2018 Jun 22;9(1):2454.

Inhibitors · Natural Compounds · Compound Libraries

This product is for Research Use Only · Not for Human or Veterinary or Therapeutic Use.

Tel:781-999-4286

E-mail:[info@targetmol.com](mailto:info@targetmol.com)

Address:36 Washington Street,Wellesley Hills,MA 02481