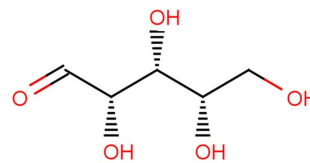


L-Xylose

Chemical Properties

CAS No.:	609-06-3
Formula:	C ₅ H ₁₀ O ₅
Molecular Weight:	150.13
Appearance:	N/A
Storage:	0-4°C for short term (days to weeks), or -20°C for long term (months).



Biological Description

Description	L-Xylose is a Xylose levo-isomers. Xylose is classified as the aldopentose type monosaccharide.
Targets(IC ₅₀)	Others: None

Solubility Information

Solubility	< 1 mg/ml refers to the product slightly soluble or insoluble
------------	---

Preparing Stock Solutions

	1mg	5mg	10mg
1 mM	6.661 mL	33.304 mL	66.609 mL
5 mM	1.332 mL	6.661 mL	13.322 mL
10 mM	0.666 mL	3.33 mL	6.661 mL
50 mM	0.133 mL	0.666 mL	1.332 mL

Please select the appropriate solvent to prepare the stock solution, according to the solubility of the product in different solvents. The storage conditions and period of the stock solution: - 80 °C for 6 months; - 20 °C for 1 month. Please use it as soon as possible.

Reference

1. Wang XX, et al. The implementation of high fermentative 2,3-butanediol production from xylose by simultaneous additions of yeast extract, Na₂EDTA, and acetic acid. N Biotechnol. 2015 Aug 3.

Inhibitors · Natural Compounds · Compound Libraries

This product is for Research Use Only · Not for Human or Veterinary or Therapeutic Use.

Tel:781-999-4286

E-mail:info@targetmol.com

Address:36 Washington Street,Wellesley Hills,MA 02481