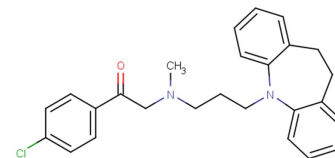


## Lofepramine

## Chemical Properties

CAS No.:	23047-25-8
Formula:	C <sub>26</sub> H <sub>27</sub> ClN <sub>2</sub> O
Molecular Weight:	418.96
Appearance:	N/A
Storage:	0-4°C for short term (days to weeks), or -20°C for long term (months).



## Biological Description

Description	Lofepramine is an effective tricyclic antidepressant and is extensively metabolised to Desipramine. Lofepramine has significant anxiolytic efficacy in addition to its antidepressant properties. Lofepramine may also potentiate serotonergic neurotransmission by inhibition of the neuronal uptake of serotonin and the enzyme tryptophan pyrrolase. The antidepressant activity of Lofepramine stems from the facilitation of noradrenergic neurotransmission by uptake inhibition.
Targets(IC <sub>50</sub> )	Others: None

## Solubility Information

Solubility	< 1 mg/ml refers to the product slightly soluble or insoluble
------------	---------------------------------------------------------------

## Preparing Stock Solutions

	1mg	5mg	10mg
1 mM	2.387 mL	11.934 mL	23.869 mL
5 mM	0.477 mL	2.387 mL	4.774 mL
10 mM	0.239 mL	1.193 mL	2.387 mL
50 mM	0.048 mL	0.239 mL	0.477 mL

Please select the appropriate solvent to prepare the stock solution, according to the solubility of the product in different solvents. The storage conditions and period of the stock solution: - 80 °C for 6 months; - 20 °C for 1 month. Please use it as soon as possible.

## Reference

1. Lancaster SG, et al. Lofepramine. A review of its pharmacodynamic and pharmacokinetic properties, and therapeutic efficacy in depressive illness. *Drugs*. 1989 Feb;37(2):123-40.

Inhibitors · Natural Compounds · Compound Libraries

This product is for Research Use Only · Not for Human or Veterinary or Therapeutic Use.

Tel:781-999-4286

E-mail:[info@targetmol.com](mailto:info@targetmol.com)

Address:36 Washington Street,Wellesley Hills,MA 02481