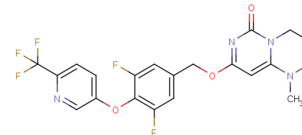


Lp-PLA2 -IN-1

**Chemical Properties**

CAS No.: 1420367-28-7  
Formula: C<sub>21</sub>H<sub>17</sub>F<sub>5</sub>N<sub>4</sub>O<sub>3</sub>  
Molecular Weight: 468.38  
Appearance: N/A  
Storage: 0-4°C for short term (days to weeks), or -20°C for long term (months).

**Biological Description**

Description	Lp-PLA2 -IN-1 suppresses Lp-PLA2 activity processes for their preparation. Lp-PLA2 -IN-1 also inhibits to compositions containing them and to their use in the treatment of diseases associated with the activity of Lp-PLA2, for example, atherosclerosis, Alzheimer's disease.
Targets(IC <sub>50</sub> )	Others: None

**Solubility Information**

Solubility	Ethanol: 25 mg/mL (53.38 mM) ( < 1 mg/ml refers to the product slightly soluble or insoluble)
------------	--------------------------------------------------------------------------------------------------

## Preparing Stock Solutions

	1mg	5mg	10mg
1 mM	2.135 mL	10.675 mL	21.35 mL
5 mM	0.427 mL	2.135 mL	4.27 mL
10 mM	0.214 mL	1.068 mL	2.135 mL
50 mM	0.043 mL	0.214 mL	0.427 mL

Please select the appropriate solvent to prepare the stock solution, according to the solubility of the product in different solvents. The storage conditions and period of the stock solution: - 80 °C for 6 months; - 20 °C for 1 month. Please use it as soon as possible.

## Reference

1. PCT Int. Appl. (2013), WO 2013014185 A1 20130131.

Inhibitors · Natural Compounds · Compound Libraries

This product is for Research Use Only · Not for Human or Veterinary or Therapeutic Use.

Tel:781-999-4286

E-mail:[info@targetmol.com](mailto:info@targetmol.com)

Address:36 Washington Street,Wellesley Hills,MA 02481